



Our mission is to preserve and enhance Milner Gardens and Woodland, to educate and inspire. All gifts to Milner Gardens help us to achieve this mission.

HIGHLIGHTS

A Walk Through The Garden	2
Snippets	2
Days of Discovery	3
Spring Courses	4
Visitors Response	5
A Gardener's Cottage Of Volunteers	6
Special Events	8



DIRECTOR'S MESSAGE

Welcome to Spring ...at last! We reopened the garden for our second season on April 4th with a beautiful Spring day. We have many new and exciting activities planned for the coming season including five Special Events (page 8). Volunteers and staff have worked hard all Winter putting these activities together in a package that we are sure will make you excited about attending and/or volunteering to help make these events a success. Just a reminder that membership does not include entry to Special Events, but does entitle you to free admittance to the garden during regular open days.

Renovations are well under way in the Milner House in preparation for the opening of the Tea Room. This renovation also includes the development of several areas dedicated to telling the story of the Milner's and those who visited this beautiful place over the years. The renovations should be completed by the end of April or early May. Once completed the House will be open to the public during regular hours and the Tea Room will be open in the afternoons from 1:00 to 4:00 p.m. This renovation project is made possible through cash and in-kind support totaling \$45,000.00 over the next two years. The donors are Windsor Plywood, Premdor Inc., John Nielson Architects, Herold Engineering and most recently the Nanaimo Community Foundation who have just announced a contribution of \$15,000.00 to the project. A crew of volunteers are hard at work planning the Tea Room, preparing the Historical Interpretation area, and contributing to carpentry, painting and other tasks required to complete the project.

In addition to the Tea Room and the story of the Milner's we are offering regularly scheduled forest, garden and social history activities. These are intended to accommodate visitors wanting a one time short course at Milner Gardens (page 2). We are also offering education courses to members and volunteers. (page 4) Staff and volunteers have made many improvements to the garden, nursery and gift shop over the course of the winter. You must come and see these for yourself. These improvements have to be seen to be appreciated.

Lastly, I am very pleased to announce that Malaspina University-College has been awarded the British Columbia Society of Landscape Architects **Community Service Award, 2002**, for the Milner Gardens and Woodland preservation. The award recognizes "an agency that has made major advances in the design, planning and management of place, has demonstrated innovation in that work, and has shown respect for and consideration of the Landscape Architecture Profession."

This is a significant award of formal recognition for what Malaspina University-College, the Milner Gardens and Woodland Society, staff, horticulture students and community volunteers have achieved through hard work, cooperative spirit and passion for this project over the past six years.

Congratulations to all and see you in the garden.

Jim Cadwaladr
Executive Director



New Activities

Afternoon Tea

Relax with a cup of tea in the drawing room or on the verandah of the 1930's cottage-style house.

April to October, Thursday to Sunday 1 pm to 4 pm

Garden Courses

This season, Milner Gardens and Woodland is offering a series of in-depth tours and workshops designed to increase awareness and appreciation of the history of the plants and people of our forest and garden.

The Forest

Two hour walk-talk through the old growth, coastal Douglas-fir forest.

1st and 3rd Saturday, April through August, 10:30 am (\$25/person –includes admission)

Into the Artist's Garden

Study the design of the ten acre garden and what influenced its artist creator, Veronica Milner, in a two hour guided tour.

1st and 3rd Friday, April through August, 10:30 am. (\$25/person-includes admission)

The Social History of Milner and Gardens

Discover the history of the people who lived at this seaside estate and their vision.

2nd and 4th Friday, May through August, 2:00 pm (\$30/person-includes admission, afternoon tea and guided tour of the historic Milner House)

Activities are available at scheduled times, and also by request for groups of 10 or more.

A WALK THROUGH THE GARDEN

It seems like spring has finally broken free of winters grasp. Over the winter things have been progressing steadily in preparation for opening, despite the snow. When you come back to visit us again you will notice a few improvements around the garden. The old tennis court/nursery now has a set of cold frames and a lathe covered area where the rotting old solar panel support structure stood. These are a big improvement to the look of the area and allow a clearer view of the nursery and garden from the pool house.

The old worn path through the orchard has been upgraded to a flagstone and gravel path which curves through the trees.

Now that spring is here the focus is shifting away from construction and more towards plants. All over the garden

plants are breaking bud or popping out of the ground. The list of things to see over the coming months is far too long to list here, but if you have never seen Milner Gardens in the spring then you must come. If you have seen it in the spring before, you will not need reminding to come and enjoy the sights and smells.

Geoff Ball
Horticulturist



SNIPPETS

This April, Volunteers, Members and the general public are invited to the garden to share in our first annual Spring Plant Sale. The event will take place over the weekend of the 27th and 28th.

Volunteers are working hard in preparation for this great event and we encourage plant lovers of all kinds to come to the garden and see what we have to offer.

The plant sale will take place in the upper parking lot and for every \$24.00 worth of plants purchased guests receive \$5.00 off their admission to the gardens.

In the gardens you'll have the opportunity to view the unique plant collections of Milner Gardens and Woodland.

Be sure to mark it on your calendar and take home a little piece of history.

Candice Coghill
Propagator



DAYS OF DISCOVERY

Identifying the Rhododendrons of Milner Gardens

Veronica Milner was introduced to rhododendron hybridizers Ted and Mary Greig in 1954 and in the following 15 years planted over 500 rhododendrons which are now the foundation of our woodland garden. This past December, the Gardens received a generous grant from the American arm of the Stanley Smith Horticultural Trust, an organization based in the United Kingdom that funds projects pertaining to the preservation and development of public gardens. Further donations were also received from The Mount Arrowsmith Rhododendron Society, The Cowichan Valley Rhododendron Society and Jim & Jean Greig. This funding supports our endeavor to identify, label and develop interpretive signage for our rhododendrons, to allow the visiting public to learn more about our unique collection.

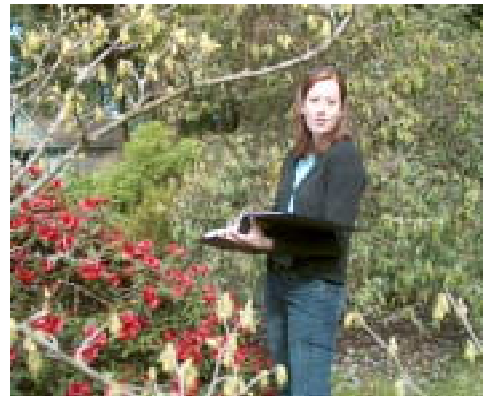
We have over 400 rhododendrons currently accessioned, with more than 150 of these unidentified or carrying names from old plant tags that require verification. Many of the old plant tags are illegible or engulfed in the bark of specimens, requiring some sleuth work to ascertain what the label may have read.

We plan to use a few different methods to tackle the enormous job of finding the lost names of our rhodies. First, we have invited a number of rhododendron experts, from B.C., Washington and Oregon, to visit the Gardens this spring and view our collection and share their expertise. We also have limited historical documentation available to us including a planting map

and invoices from the Greig's Royston Nursery from the 1960's. These documents give us the advantage of narrowing the potential names available – its easier to choose from 500 possible names than from the thousands of rhododendrons that exist in cultivation today.

The most painstaking but accurate method of identification will be using botanical keys. 'Keying out' a specimen requires closely analyzing flower parts and leaves for characteristics such as size and shape, as well as microscopic details like minute hairs and glands. It's a very detailed, methodical and fascinating process. In my job, there is nothing quite so satisfying as being able to successfully label a plant that has been nameless for decades.

Kristi Ozero
Plant Records



Book Release

In Veronica's Garden, the story of the development of the Milner Gardens and Woodlands will be release this spring. The book, written by Margaret Cadwaladr, traces the life of Veronica Milner from her birth in England, years in an Irish castle and associations with artists and garden experts. Finally, it details the creation of the beautiful "wild garden" in the Qualicum forest.

Veronica's son, Desmond FitzGerald, the Knight of Glin, wrote an Introductory Note to the book, while Malaspina University-College President Rich Johnston wrote the Foreword.

A donation towards the preservation of the garden will be made from the proceeds of this book.

The book will be available in the garden gift shop in May for \$34.95 plus GST.

It can also be ordered by calling 1-800-866-5504, by fax at 250-6934 or email at inveronicasgarden@shaw.ca.

Come and learn at Milner Gardens. Our education program has been expanded this spring and will continue to grow. The courses offered below allow you to learn more about plants growing at the gardens and how to propagate them. These courses are being offered to volunteers at a reduced rate as these courses will help them understand the garden better and allow them to interpret it to others or to work within the garden with more confidence. To register for a course, please fill out the form below and mail it in or drop it off in person. Registration begins on April 8th.

Short courses on the forest, garden and social history associated with the garden are also being offered twice a month on a drop in basis; please see the article on page 2 regarding these courses.

Spring 2002 Course Schedule

Introduction to the plants at Milner Gardens and Woodland

In these beginners courses you will use the Binomial System of plant classification. You will be introduced to approximately 35 plants per course and will begin a plant file that will enable you to record the botanic and common names of plants, their characteristics, cultivation and care.

1) Rhododendrons and Companion Plants

Session: (a) Mon April 22nd, 29th, May 6th & 13th 10-12 PM
 (b) Tue April 23rd, 30th, May 7th & 14th 1-3 PM

Volunteers: \$20

Members: \$65

Location: Gardener's Cottage

2) Shrubs and Perennials

Session: (a) Tues May 28th, June 4th, 11th & 18th 1-3 PM
 (b) Thurs May 30th, June 6th, 13th, & 20th
 6:30 - 8:30 PM

Volunteers: \$20

Members: \$65

Location: Gardener's Cottage

Spaces are limited so acceptance to course(s) will be based on the order in which payment is received.

Please include payment with registration form.

Cheques are made out to: **Milner Gardens and Woodland**

Applications in person to:
 Pam Jonnson
 Office, Milner Gardens House

Applications by mail (**Visa/MasterCard or cheque**) to:
 Education Programs
 Pam Jonnson
 Milner Gardens and Woodland
 2179 West Island Highway
 Qualicum Beach, B.C. V9K 1G1

COURSE REGISTRATION FORM

Name: _____
 (please print)

Address: _____

Telephone: _____ Fax: _____

E-mail: _____

Please circle one: **Volunteer** **Member**

Payment:
Cash _____
Cheque _____
Visa/MasterCard

(credit card number)
____/____
(expiry date)

(name on credit card)

COURSE	SESSION	FEE
	TOTAL	



VISITOR RESPONSE 2001

“Better than anything in Victoria”... just one of the many positive comments about Milner Gardens and Woodland found in our guest register from last season. The Marketing Committee recently reviewed visitor information from our first season. The results of this process show some interesting trends about our visitors, and although by no means scientific, (guest books were initiated in August, 2001), tracking our visitors for an entire season should give us more accurate planning information for 2003. Our visitor analysis from the beginning of August 2001, until closing, (excluding the Community Appreciation day) revealed that an amazing 48% were from “off-island”. Under “How did you hear?” 39% of the guests had heard by word of mouth, another 39% by reading newspaper articles, and the balance from other sources.

The comments of these visitors are a wonderful reminder of why we are all here, the beauty of the gardens, the feeling of pride in being involved in a project of importance to the community. Our visitors, like ourselves, find a quality in the experience of Milner Gardens and Woodland that is unique. Uniformly enthusiastic, they praised the natural wonders as well as the staff and volunteers.

In an effort to build awareness of Milner Gardens, and draw more visitors this season, Jim Cadwaladr, Executive Director, and the marketing committee have been involved in a number of marketing activities over

the winter. Among the most exciting is the formation of a new Vancouver Island Garden Association, as well as participation in a network of “Emerging Gardens of the Pacific Northwest”. These contacts, along with an initiative of the BC Tourism and BC Landscape and Nursery Trade called “Garden Inspired Tourism” are all helping to promote BC, and Vancouver Island as destinations for garden and outdoor enthusiasts. In addition, we have been working with our own Oceanside Tourism Association to make tourists more aware of the region and Milner Gardens and Woodland through ads in tourism publications and newspaper vacation tabloids. With so many new offerings for our visitors this year...from the many special events and visitor programming to the opening of the house and the addition of the Tea Room, we are optimistic that we will see a substantial increase in visitors. As stats from the past season show, our most effective form of communication is the “good word” of all our members and volunteers...keep sharing your “secret garden” and encourage more people to come to the garden and forest to enjoy and be inspired by this beautiful legacy!

Shauna de Kluyver
Marketing Committee

"Our first informational estate planning and planned giving seminar and Garden Tour was held in early March. The informal seminar, conducted by a local lawyer and a chartered accountant, provided valuable information and answered many questions for the 15 attendees. Another such seminar and tour are planned in the fall. If you would like further information about this event or would like to attend, please call 752-8573."

SEND MORE INFORMATION

**I would like to receive
Information about:**

- Donor Bench Program
- Contributing to a Capital Project
- Making a will bequest to Milner Gardens and Woodland
- Milner Gardens and Woodland Endowment Fund

Milner Gardens and Woodland
2179 West Island Highway,
Qualicum Beach, BC V9K 1G1
(250)752-8573

Please Print

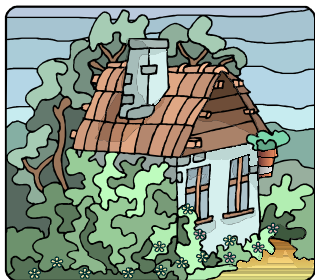
Mr. Mrs. Ms. Miss Dr.

Name: _____

Address: _____

City _____ Prov/State: _____

THE GARDENER'S COTTAGE OF VOLUNTEERS



WISH LIST

Propagation

2 ½ " pots
1 Gal pots
plug in fluorescent light
4' (x5)
full spectrum 4' fluorescent
bulbs (x4)
plug trays
clear plastic domes for plug
trays
light timer (x2)

House and Gift shop

CD Player
Colour Printer-large format
Sandwich Plates
3 tiered serving dishes
Cake plates
Heavy duty stapler
Slide projector carousel
style
Laminator
Easel
Fridge
100 cup coffee pot
30 cup coffee pot x 4
Cash boxes
Large bread baskets
Tea Pots
Scanner
Wide-slot toaster

Hello Again and Welcome to our Second Season at Milner Gardens and Woodland! The staff has been busy for the last five months, but could not have made it to this point without the help of all our dedicated volunteers.

Volunteers have been hard at work applying their many and varied skills to Milner Gardens and Woodland. Volunteers are renovating the main house in preparation for the opening of a Tea Room and interpretative area. It is a lot of labour-intensive, hard work, but our volunteers are dedicated and keep at the job. This room will be an exciting addition to the Milner Gardens experience. The future of what this place will become is apparent when one sees the volunteers participating out in the garden, at the nursery, on various construction projects, in the office or serving on one of the many committees, as well as staffing all the positions necessary to open the Gardens to the public on a daily basis.

I seem to always be asking for more wonderful, dedicated, volunteers, or for some valuable expertise, or for something else that will benefit the Gardens, but I guess that is the nature of my job. Sooo... We do need more volunteers to staff the Gardens, especially at the Gate House and Gift Shop. Also, I am looking for someone who knows a lot about designing web sites who would be interested in helping the volunteer who is working on our new web site as I write this. This could work into managing the site as well. We also need someone who is technically inclined and good with sound systems. As of right now, this person would be required for the Oceanside Rhododendron Festival. The other area where I really need volunteers is to work on the special events. The Rhododendron Festival, over a period of three days, followed by Mother's Day, is going to be the biggest challenge. So, if you

haven't already, please contact me to let me know which of the special events you would like to participate in and in what capacity. We have a great group of volunteers on the Special Events Team, but we do need people who would like to take on a role that they would do for each special event to add to the consistency of our events. Some of those jobs are not very exciting, but are things like coordinating the setting up of the tents, making sure the bathrooms are clean and have supplies, collecting garbage from the various cans.

If you have family, friends, neighbours - or see someone on the street who you think might fit into our beautiful gardens ;<) - please send them my way. We do want everyone to enjoy the Gardens, meet new people, learn some new things and have fun doing it. If you are a 'seasoned' volunteer, I thank you for coming back to help us for another year and for your support and encouragement. If you are a new volunteer, I thank you for your interest and for taking on the challenge of assisting us in making Milner Gardens and Woodland an unforgettable experience for all our visitors.

DON'T FORGET: If you have an e-mail address that you are willing to let me use to communicate with you, as a volunteer or as a member, please get it to me by giving me a call or sending me an e-mail. I realize that it isn't as personal, but it sure helps me to do my job a little more quickly and efficiently.

Pat Palmer
Volunteer Coordinator



MISSION STATEMENT
To preserve and enhance
the Milner Gardens and
Woodland to educate and
inspire

OPEN TO THE PUBLIC
APRIL 4th TO OCTOBER 27th
THURSDAY TO SUNDAY
AND
STATUTORY HOLIDAY MONDAYS
10:00 A.M.—5:00 P.M.

Milner Gardens and Woodland
2179 West Island Highway
Qualicum Beach, BC
V9K 1G1

Reservations: 250-752-6153
Fax: 250-752-3826

E-mail: milnergardens@shaw.ca
Web: <http://milnergardens.mala.bc.ca>

STAFF AT MILNER GARDENS

Jim Cadwaladr
Executive Director

Pam Jonnson
Executive Assistant

Geoff Ball
Horticulturist

Kristi Ozero
Plant Records/GIS

Candice Coghill
Propagator

Administration: 250-752-8573

Pat Palmer
Volunteer Coordinator
Volunteer Services: 250-752-7514

Special Events 2002

Brant Festival April 13th & 14th

Milner Gardens will provide a festival venue for workshops on backyard biodiversity, birds of the Garden and forest and how to attract birds to your own yard. Reduced admission.

Spring Plant Sale April 27th – 28th

Add a piece of this heritage garden to your own yard at our First Annual Plant Sale. A vast selection of propagated material will be offered for sale, as well as reduced admission with purchase.

Oceanside Rhododendron Festival May 9th–11th

Workshops, displays, guest speakers and a truss show presented in partnership with Mt Arrowsmith Rhododendron Society. Spectacular show of hundreds of Rhododendrons at Milner Gardens and many private gardens open for tours during the festival. Tickets in advance and at the gate.

An Affair of Note June 23rd

Musicians of the Vancouver Island Symphony perform in intimate groups throughout the garden and forest while guests stroll and sample garden-themed cuisine and wines. This is a joint fund raising event in support of both the Symphony and the Gardens. Advance tickets sales only.

Art & Photography in the Garden July 27th-28th

Watch local artists at work in the heritage garden and participate in workshops on painting, sketching or photography and experience the beauty of this artist's garden.

***For information on these events or to make
reservations call (250) 752-6153***

Just a reminder that membership does not include entry to Special Events, but does entitle you to free admittance to the garden during regular open days.