

LEGEND

EXISTING	PROPOSED	DESCRIPTION	EXISTING	PROPOSED	DESCRIPTION
---	---	EDGE OF PAVEMENT	---	---	REDUCER
---	---	CURB AND GUTTER	---	---	FENCE
---	---	EDGE OF GRAVEL	---	---	DITCH/SWALE
TB/BB	---	TOP/BOTTOM OF BANK	WM	WM	WATERMAIN (SIZE AND MATERIAL NOTED)
CB	---	CATCH BASIN	SS	SS	SANITARY SEWER (SIZE AND MATERIAL NOTED)
WV	---	WATER VALVE	SD	SD	STORM DRAIN (SIZE AND MATERIAL NOTED)
FH	---	FIRE HYDRANT	UT	UT	UNDERGROUND TELEPHONE
---	---	CAPPED END	UH	UH	UNDERGROUND HYDRO
---	---	UTILITY POLE AND STREET LIGHT (LABELED PP,TP,PP/LS ETC.)	○		MONUMENT
MH	---	MANHOLE			PROPERTY LINE
CO	---	CLEANOUT		5+100 5+110	CENTERLINE AND STATIONING
SSIC/SDIC	---	SANITARY/STORM INSPECTION CHAMBER (200# RISER)			SANITARY SEWER SERVICE CONNECTION AT MAIN
JB	---	JUNCTION BOX	+32.75	(43.170)+	ELEVATIONS
AV	---	AIR VALVE			PAVEMENT REMOVAL
WM	---	WATER METER			NEW ASPHALT

GENERAL NOTES:

- ALL WORK AND MATERIALS ARE TO BE AS DESCRIBED IN THE CITY OF NANAIMO ENGINEERING STANDARDS & SPECIFICATIONS LATEST EDITION OR AS OTHERWISE APPROVED BY THE ENGINEER.
- CONNECTION TO, OR ALTERATION OF, EXISTING VANCOUVER ISLAND UNIVERSITY OWNED UTILITIES, REQUIRES AUTHORIZATION BY THE ENGINEER.
- THE FACILITIES SERVICES AND CAMPUS DEVELOPMENT DEPARTMENT SHALL BE NOTIFIED 48 HOURS PRIOR TO COMMENCEMENT OF WORK.
- THE ENGINEER SHALL BE NOTIFIED 48 HOURS PRIOR TO COMMENCEMENT OF WORK.
- CONTRACTOR TO COMPLY WITH ALL APPLICABLE MINISTRY OF ENVIRONMENT AND DEPARTMENT OF FISHERIES & OCEANS CANADA REQUIREMENTS AT ALL TIMES DURING CONSTRUCTION.
- CONTRACTOR TO CONFIRM LOCATION OF EXISTING UTILITIES AT ALL CROSSINGS AND CONNECTIONS AND REPORT ANY DISCREPANCIES TO THE ENGINEER PRIOR TO CONSTRUCTION.
- CONTRACTOR TO CONFIRM THAT ELEVATION, LOCATION AND GRADIENT OF ASPHALT MATCH EXISTING PRIOR TO PLACEMENT OF ASPHALT OR CONCRETE.
- ALL TREES NOT BEING REMOVED IN THE CONSTRUCTION AREA SHALL BE PROTECTED.
- ADJUST ALL MANHOLES, WATER VALVES, HYDRO VAULTS, ETC. TO MATCH NEW CONSTRUCTION.
- ALL LOCATIONS AND ELEVATIONS OF EXISTING UTILITIES SHOWN ARE APPROXIMATE ONLY AND SHOULD BE CONFIRMED BY USE OF A PIPE LOCATOR AND MANUAL DIGGING. ALL OR ANY STRUCTURES NOT NECESSARILY SHOWN.
- ALL ELEVATIONS ARE TO GEODETIC DATUM AND ARE REFERENCED TO MONUMENT 77H5249 AT THE INTERSECTION OF FOURTH ST. & WAKESIAH AVE. ELEVATION = 66.973
- DATA SOURCES:  
-TOPOGRAPHIC SURVEY COMPLETED BY HEROLD ENGINEERING LTD.  
-ASBUILTS PROVIDED BY VANCOUVER ISLAND UNIVERSITY.

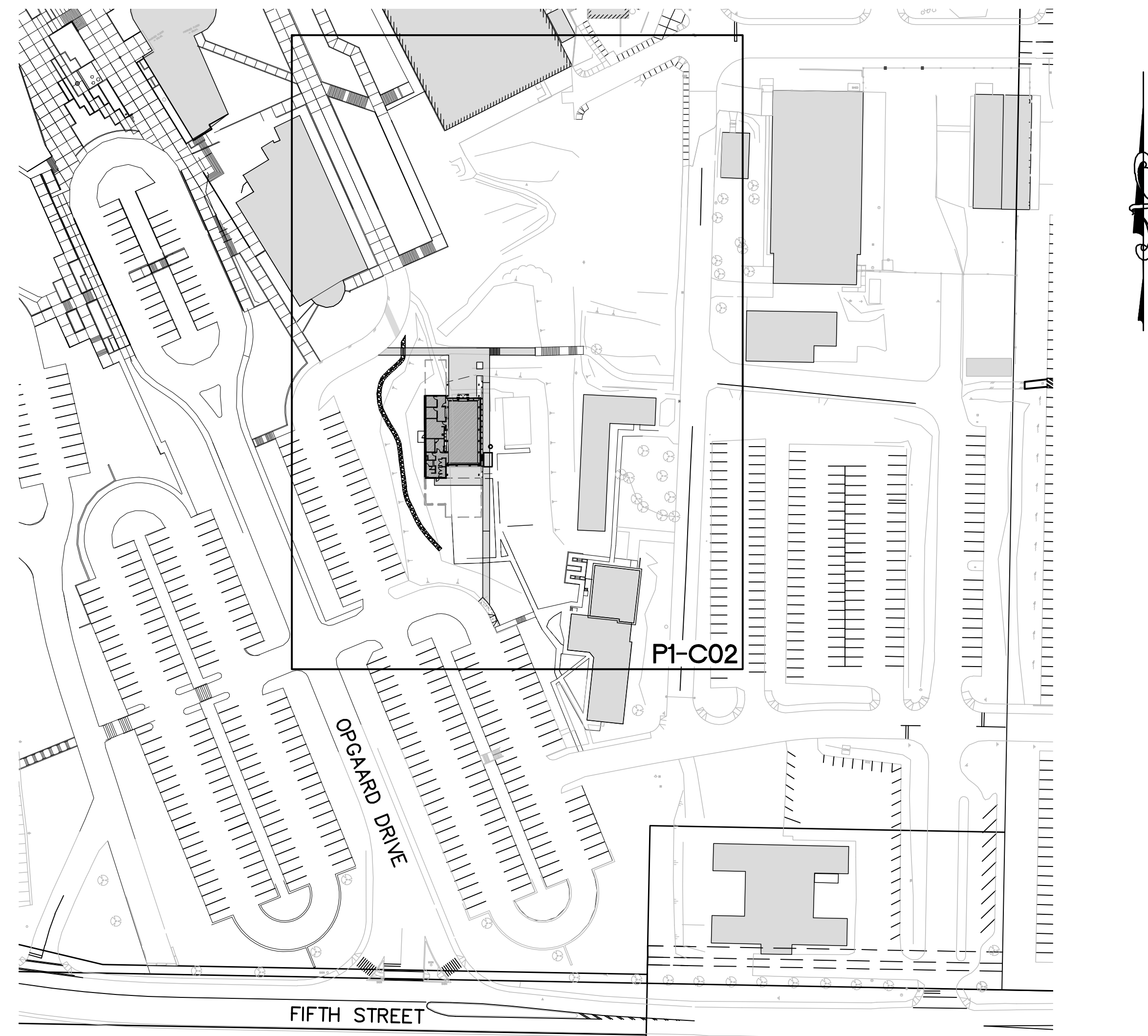
NO.	DESCRIPTION:	DATE:
F	ISSUED FOR CONSTRUCTION	17JUN09
E	ISSUED FOR PH 1 100% REVIEW	15MAY09
D	ISSUED FOR ESTIMATING & REVIEW	03APR09
C	ISSUED FOR 100% DD REVIEW	27FEB09
B	ISSUED FOR 75% DD REVIEW	04FEB09
A	ISSUED FOR DD COORDINATION	27JAN09

**HEROLD ENGINEERING LIMITED**  
 Consulting Engineers  
 3701 Shenton Rd, Nanaimo, BC V9T 2H1  
 Tel: 250-751-8558 Fax: 250-751-8559  
 Email: mail@heroldengineering.com

Copyright reserved. This drawing remains the exclusive property of Herold Engineering Limited and may not be reused or reproduced without written consent of Herold Engineering Limited.

LIST OF DRAWINGS

DWG. No.	DESCRIPTION
P1-C01	KEY PLAN, DRAWING LIST & GENERAL NOTES
P1-C02	SITE SERVICING



KEY PLAN  
(1:1000)



PROJECT NO.: 2214-001

PROJECT TITLE:  
**THE GATHERING PLACE**  
Vancouver Island University  
Nanaimo, B.C.

DRAWING TITLE:  
**KEY PLAN,  
DRAWING LIST &  
GENERAL NOTES  
PHASE 1**

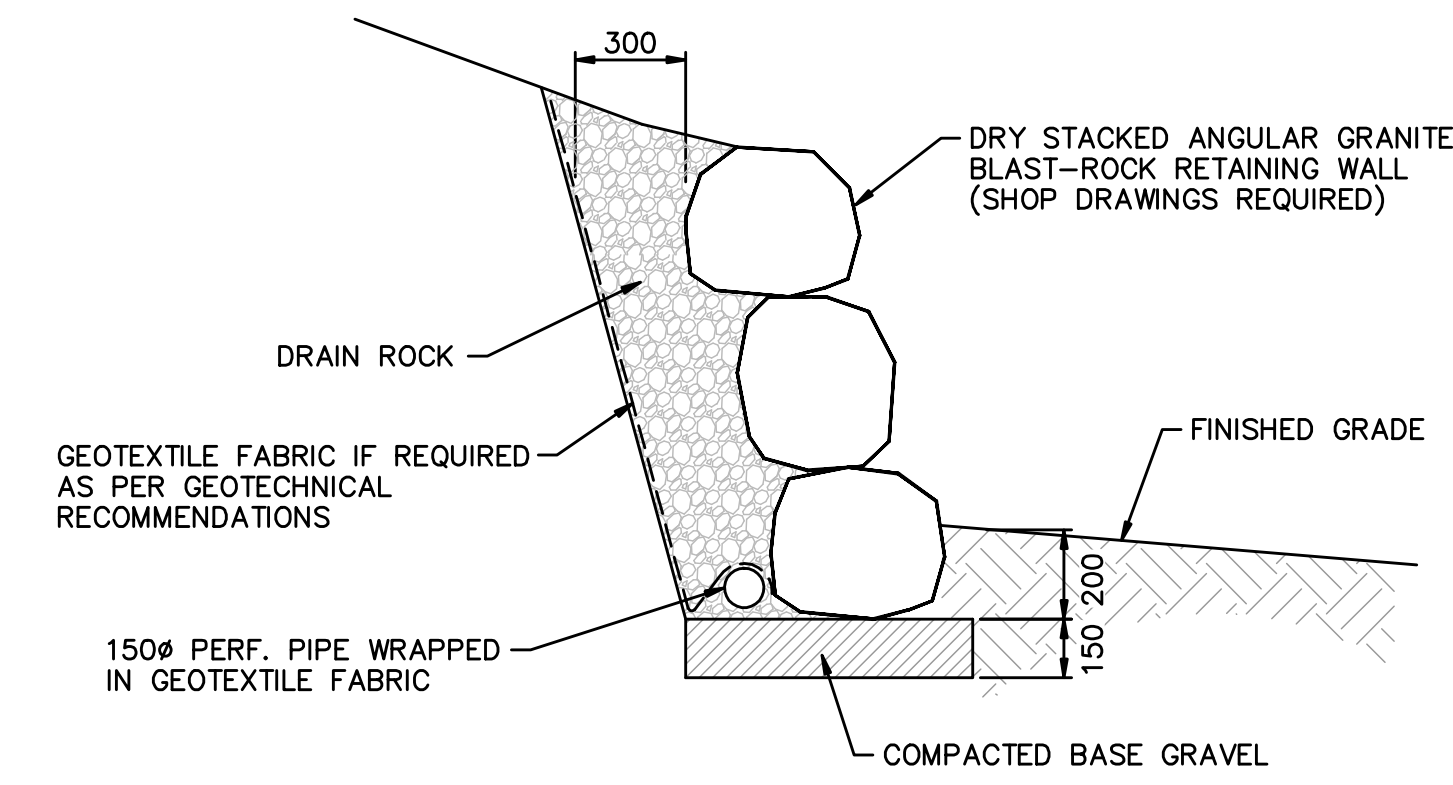
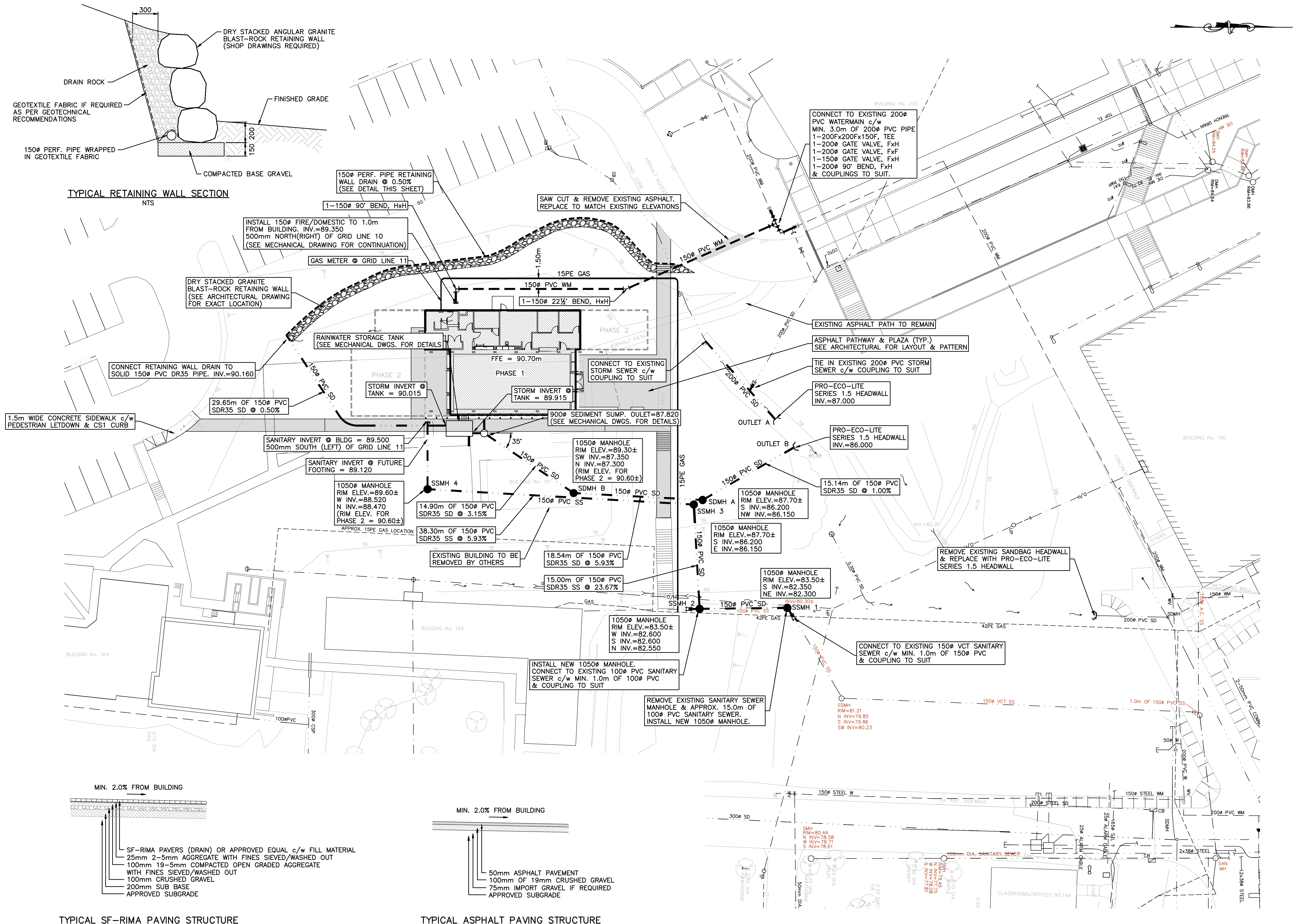
SCALE: 1:1000  
 DATE: JAN 2009  
 DRAWN: IEB  
 CHECKED: GPH  
 APPROVED: GPH  
 FILE :  
 XREF :

DRAWING NO.:  
**P1-C01**  
 REVISION NO. 1

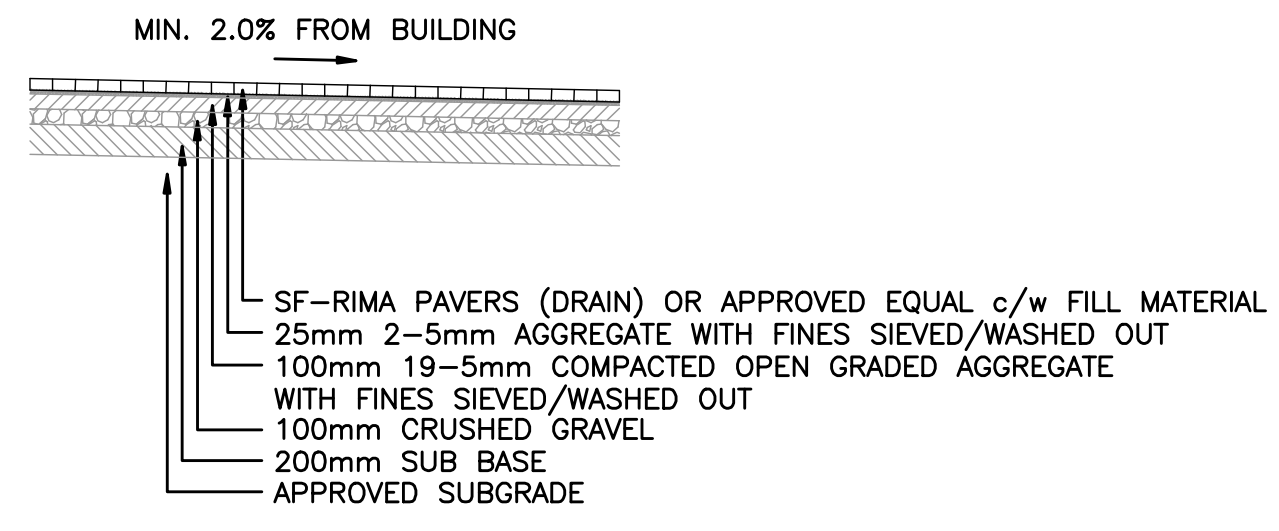
NO.	DESCRIPTION:	DATE:
F	ISSUED FOR CONSTRUCTION	17JUN09
E	ISSUED FOR PH 1 100% REVIEW	15MAY09
D	ISSUED FOR ESTIMATING & REVIEW	03APR09
C	ISSUED FOR 100% DD REVIEW	27FEB09
B	ISSUED FOR 75% DD REVIEW	04FEB09
A	ISSUED FOR DD COORDINATION	27JAN09

**HEROLD ENGINEERING LIMITED**  
 Consulting Engineers  
 3701 Shenton Rd, Nanaimo, BC V9T 2H1  
 Tel: 250-751-8558 Fax: 250-751-8559  
 Email: mail@heroldengineering.com

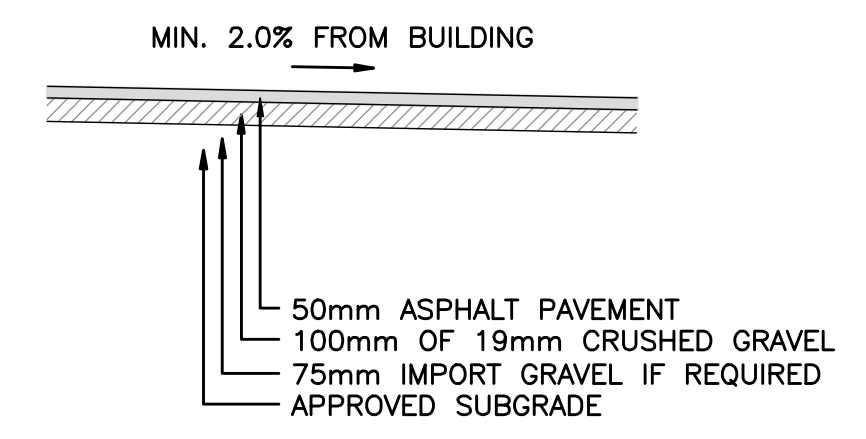
Copyright reserved. This drawing remains the exclusive property of Herold Engineering Limited and may not be reused or reproduced without written consent of Herold Engineering Limited.



TYPICAL RETAINING WALL SECTION  
NTS



TYPICAL SF-RIMA PAVING STRUCTURE  
NTS

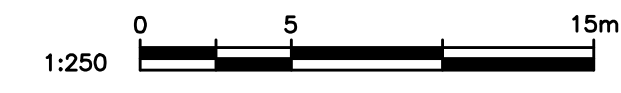


TYPICAL ASPHALT PAVING STRUCTURE  
NTS

File: H:\Projects\2214-001 VU Gathering Place - Civil\CAD Drawings\Civil Drawings 2214-001 Phase 1.dwg Plot Time: Jun 18, 2009 - 12:54pm User: ibower

NOTE:  
SEE ARCHITECTURAL DRAWINGS FOR AREAS WITH SF-RIMA PAVERS

NOTES:  
1. FOR GENERAL NOTES SEE DWG No. P1-C01  
2. FOR SITE GRADING & SIDEWALK TYPES/EXTENTS SEE ARCHITECTURAL DRAWINGS



PROJECT NO.: 2214-001  
 PROJECT TITLE:  
**THE GATHERING PLACE**  
 Vancouver Island University  
 Nanaimo, B.C.

DRAWING TITLE:  
**SITE SERVICING**  
**PHASE 1**

SCALE:	1:250	DRAWING NO.:
DATE:	JAN 2009	<b>P1-C02</b>
DRAWN:	IEB	
CHECKED:	GPH	
APPROVED:	GPH	
FILE :		
XREF :		REVISION NO. <span style="border: 1px solid black; padding: 2px;">1</span>