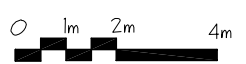


First Floor Area = 683m<sup>2</sup> + 27m<sup>2</sup>(stairs)  
 = 710m<sup>2</sup>  
 Total Area = 1200m<sup>2</sup>



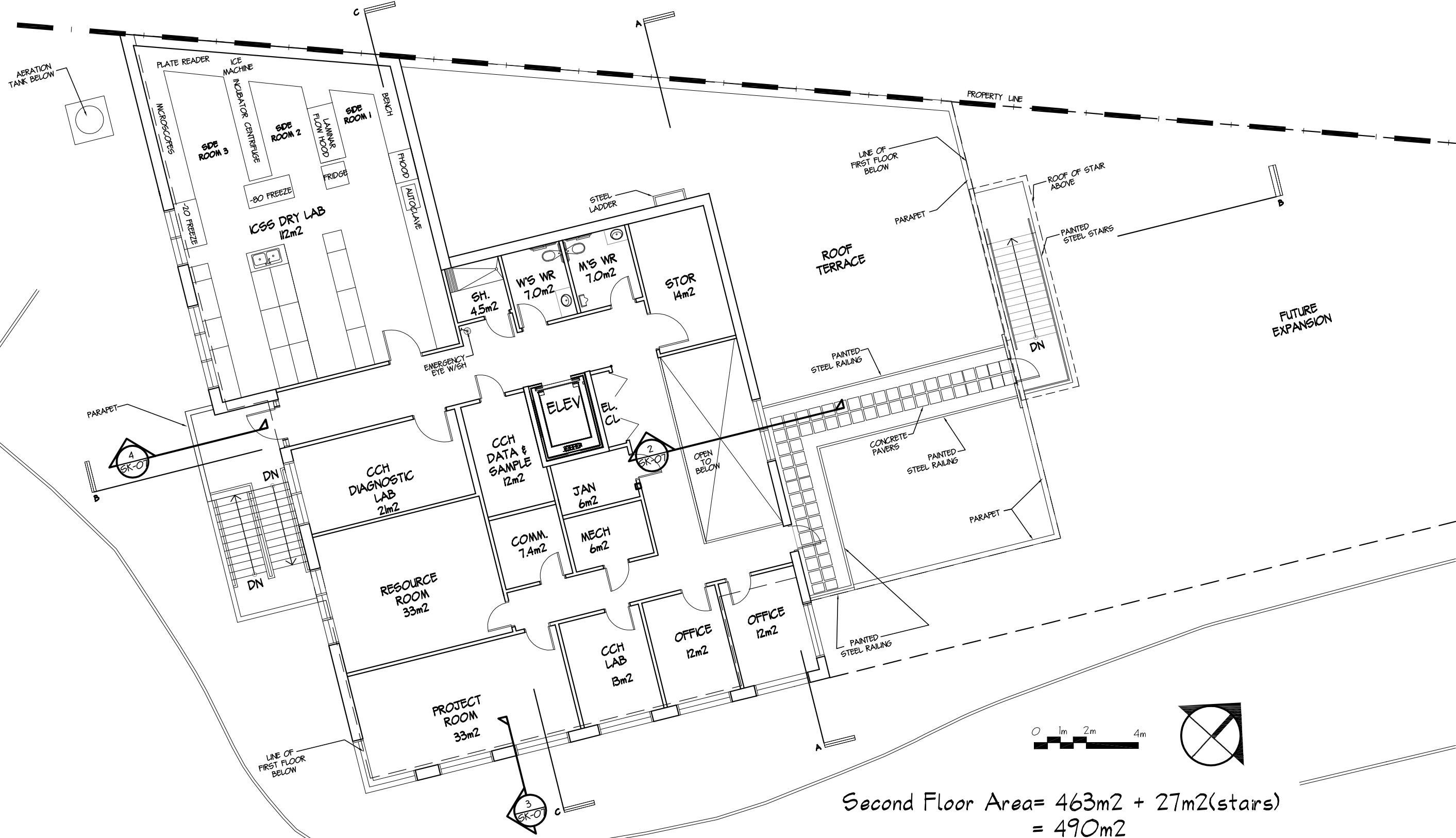
INTERNATIONAL CENTRE FOR STURGEON STUDIES  
 CHERNOFF THOMPSON ARCHITECTS

SK-02

DRAWN = NM/LP  
 PROJECT NO. = 28013.0  
 SCALE = 1:50  
 DATE = 25 FEB 09

SCHMATIC DESIGN

4202X-0001 2202X-0001



Second Floor Area = 463m<sup>2</sup> + 27m<sup>2</sup>(stairs)  
= 490m<sup>2</sup>

Total Area = 1200m<sup>2</sup>

INTERNATIONAL CENTRE FOR STURGEON STUDIES  
 CHERNOFF THOMPSON ARCHITECTS

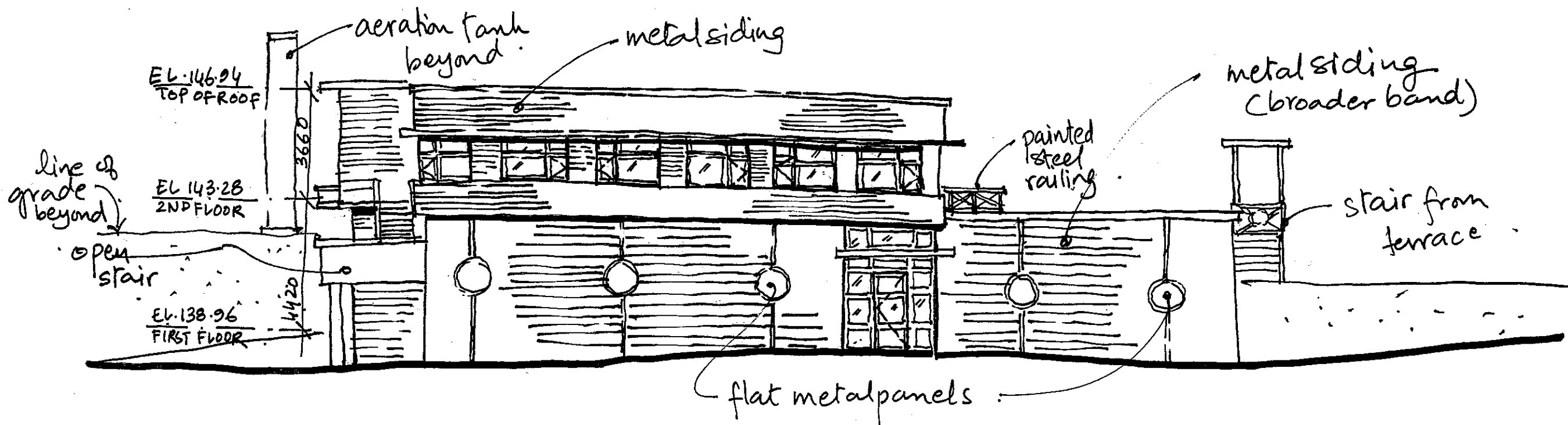
SK-03

SCHEMATIC DESIGN

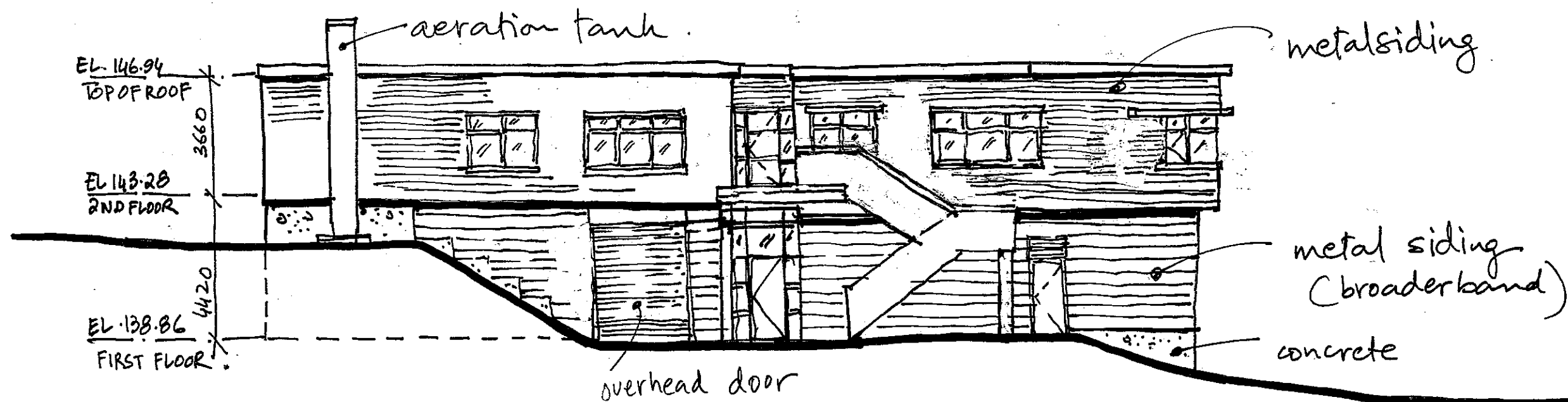
DRAWN = NM/LP  
 PROJECT NO. = 2803.0

SCALE = 1:150  
 DATE = 25 FEB 09

4/20/09 11:23 AM 1:20 PM 1:20 PM



SOUTH ELEVATION



WEST ELEVATION

0 1m 2m 4m

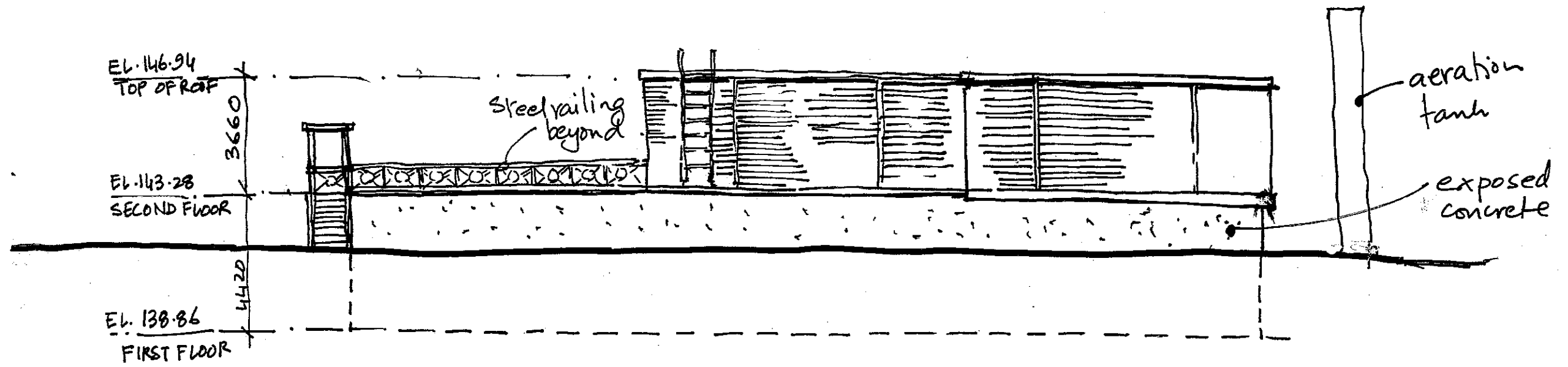
INTERNATIONAL CENTRE FOR STURGEON STUDIES  
 CHERNOFF THOMPSON ARCHITECTS

DRAWN = NM  
 PROJECT NO. = 28013.0

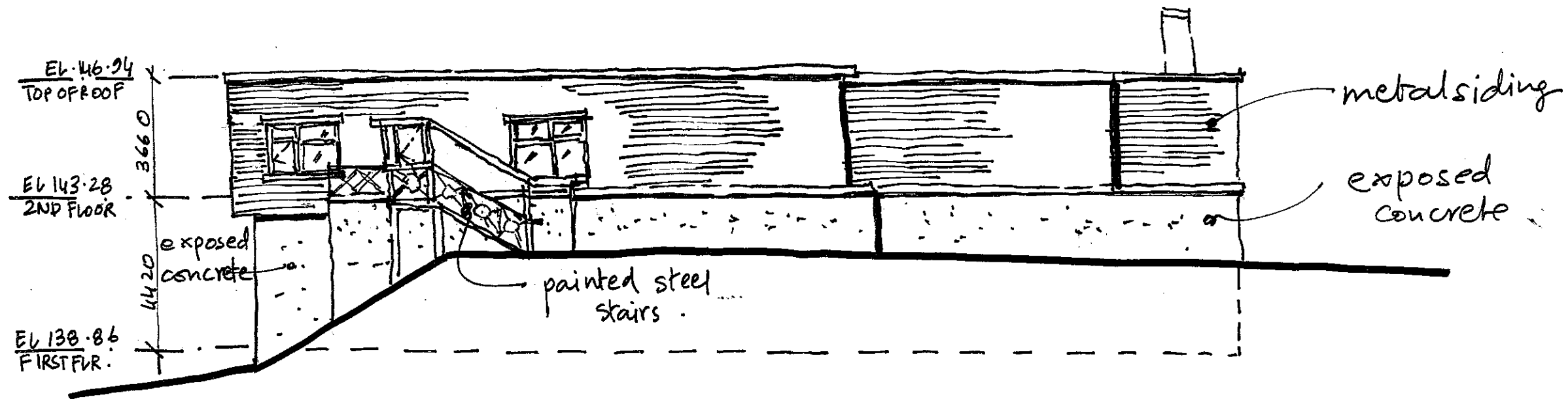
SCALE = 1/60  
 DATE = 25 FEB 08

SK-04

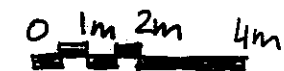
SCHEMATIC DESIGN



NORTH ELEVATION



EAST ELEVATION



INTERNATIONAL CENTRE FOR STURGEON STUDIES  
 CHERNOFF THOMPSON ARCHITECTS

DRAWN = NM  
 PROJECT NO. = 28013.0

SCALE = 1:60  
 DATE = 25 FEB 09

SK-05

SCHEMATIC DESIGN