

**SITE PLAN**  
1:500

**LEGEND**

	EXTERIOR MAN DOOR
	OVERHEAD DOOR
	'NEW' BUILDING
	'EXISTING' BUILDING
	ASPHALT PAVING
	NEW CONCRETE ASPHALT
	FIRE HYDRANT

- SHEET NOTES**
- EXISTING PARKING AREA
  - EXISTING RETAINING WALL
  - EXISTING CONCRETE CURB
  - MAIN ENTRANCES TO BUILDING SUITES TO CONFORM TO BCBG2006 3.8.3.5.(1). TYPICAL FOR 4 ENTRY DOORS.
  - EXISTING PLANTER W/ LANDSCAPING
  - CONCRETE FILLED STEEL PIPE BOLLARDS
  - NEW RETAINING WALL
  - NEW 1.5m HIGH CHAIN LINK FENCING
  - DRIVEWAY FINISH TO BE ASPHALT, SEE CIVIL DRAWINGS
  - NEW 1.2m WDE EXIT PATH, SEE NOTE 9 FOR FINISH

- WASTE BIN W/ FENCED ENCLOSURE (1.83Wx1.22Dx1.52H BIN). SEE STRUCTURAL
- EXISTING CHAIN LINK FENCE
- EXISTING METAL SWING GATE
- NEW METAL SWING GATES
- MODEL L-1903 SECURITY LIGHTING, WALL MOUNT TYPE, SEE ELEVATIONS
- RAIN GARDEN, SEE CIVIL DRAWINGS
- GRAVEL AREA, SEE CIVIL DRAWINGS
- FIRE HYDRANT, COORDINATE WITH CIVIL DRAWINGS. LOCATION OF FIRE DEPARTMENT PUMPER CONNECTION TO BE COORDINATED WITH SPRINKLER DESIGN.
- COORDINATE LOCATION OF EXTERIOR CONCRETE PAD FOR HVAC UNIT(S) WITH MECHANICAL.

**SITE DATA**

CIVIC ADDRESS: 3960 SELKIRK AVENUE, POWELL RIVER, BC  
 LEGAL DESCRIPTION: LOT , SECTION , RANGE , DISTRICT, PLAN  
 PID:  
 ZONING:  
 SITE AREA:  
 BUILDING AREA: 418.44 SQ. M / SITE AREA = % (COVERAGE) ( % COVERGE PERMITTED)  
 BUILDING HEIGHT: ±7.65 m ( m PERMITTED)  
 GROSS FLOOR AREA = 418.44 SQ. M. (GROUND FLOOR)

1 2010.02.02 CLIENT REVIEW  
 No. DATE ISSUED FOR

**HEROLD ENGINEERING LIMITED**  
 Consulting Engineers  
 3701 Shenton Rd, Nanaimo, BC V9T 2H1  
 Tel: 250-751-8558 Fax: 250-751-8559  
 Email: mail@heroldengineering.com  
 © Copyright reserved. This drawing remains the exclusive property of Herold Engineering Limited and may not be reused or reproduced without written consent of Herold Engineering Limited.

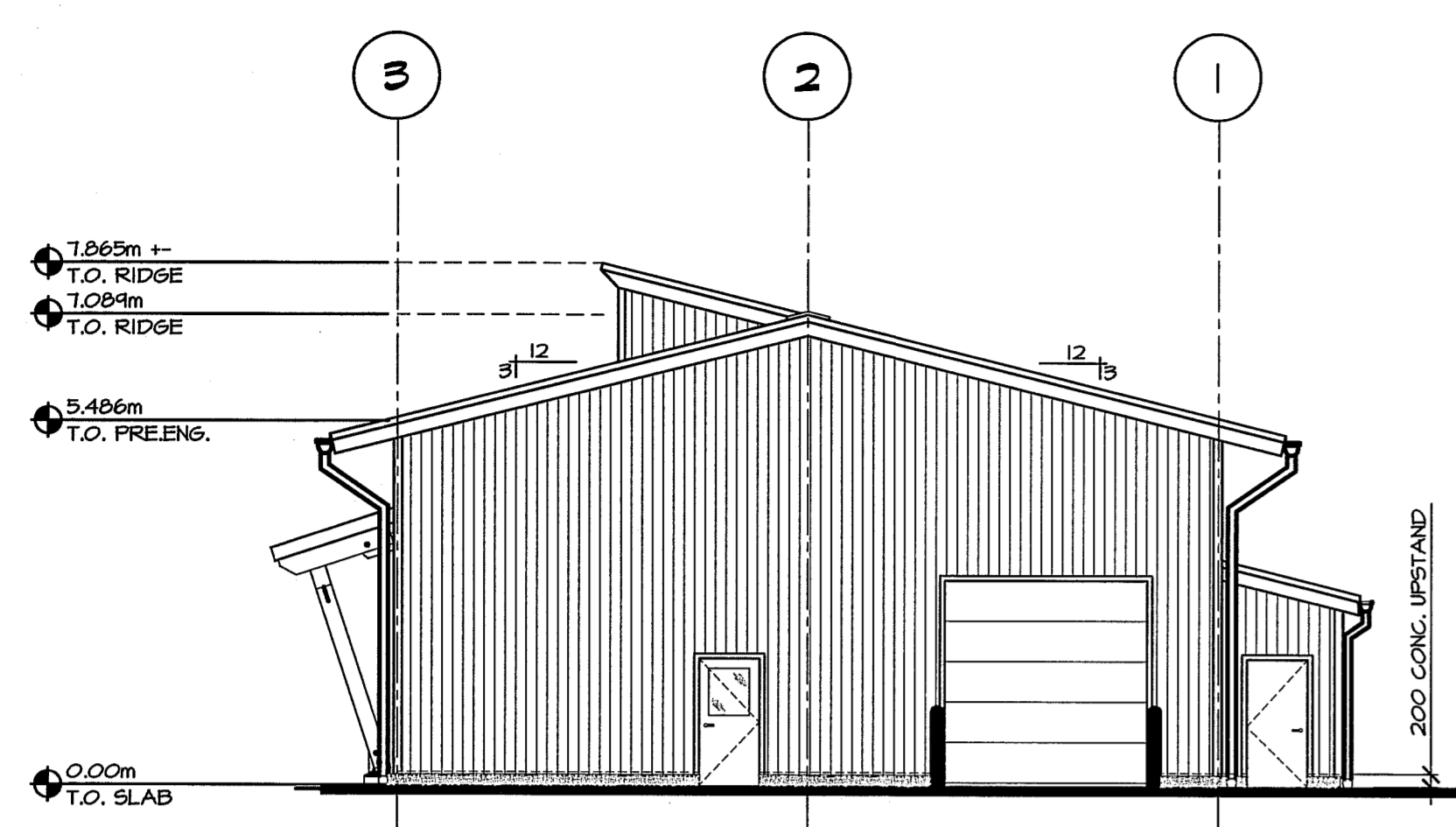
TRADE FACILITY - CARPENTRY AND AUTOMOTIVE SHOPS

VIU - POWELL RIVER CAMPUS, B.C.  
 VANCOUVER ISLAND UNIVERSITY

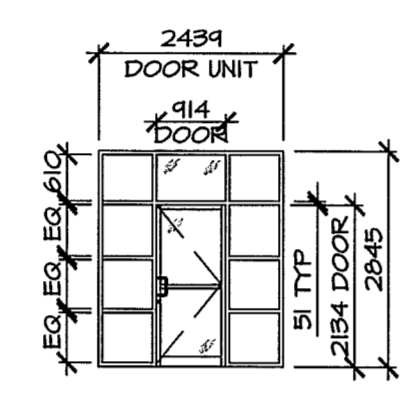
**SITEPLAN**

DESIGNED ES	ENGINEERS SEAL	
DESIGN REVIEW -		
DRAFTED POZ		
DRAFTING REVIEW -		
PROJECT No. 0029-116	DATE 2010.01.28	
SCALE AS SHOWN	SHEET 1 of 2	REV 1
DRAWING No. <b>A100</b>		

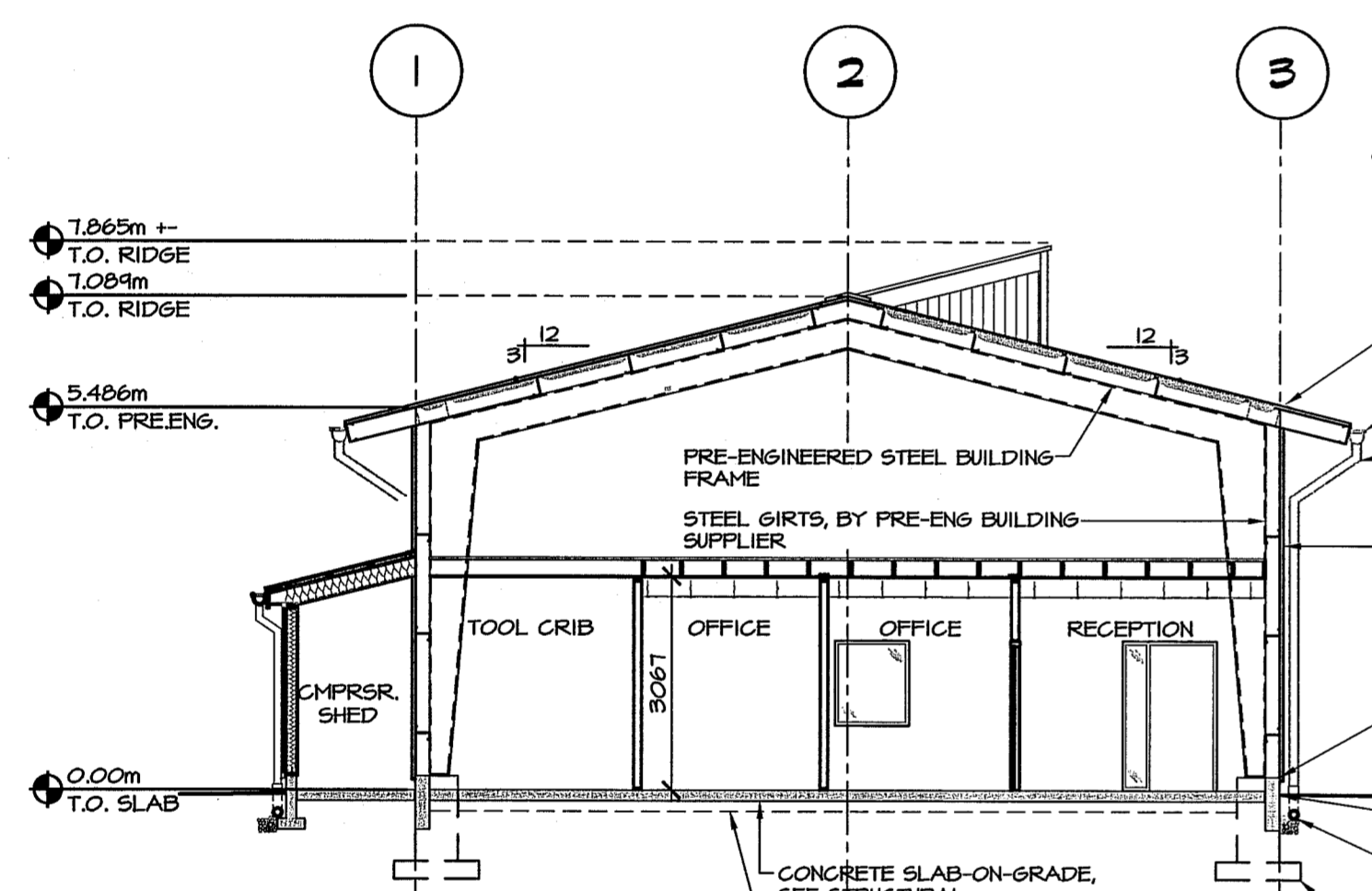
File: C:\Program Files\Autocad 2007\HEROLD ENGINEERING LIMITED\PROJECTS\2009\CURRENT\116-A200.dwg Plot Time: Mar 01, 2010 - 5:24pm User: Per



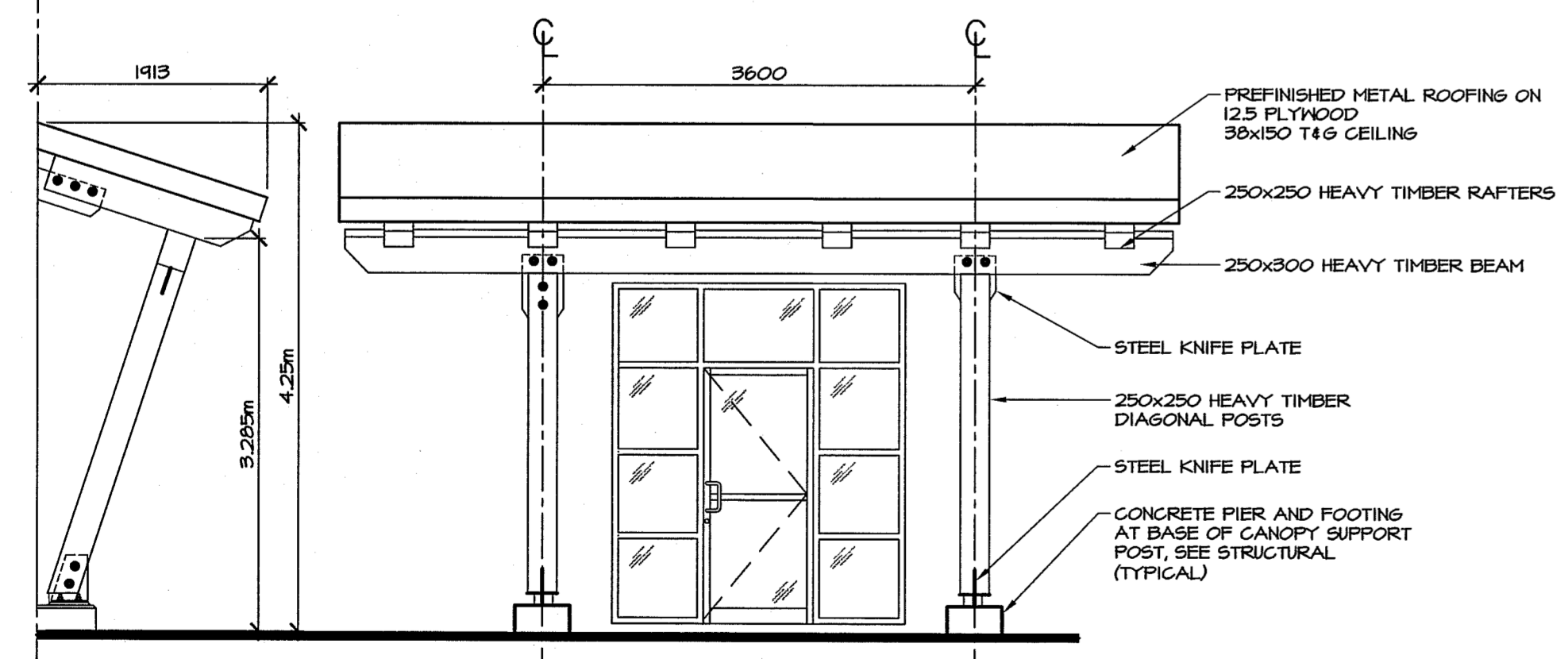
**SOUTH ELEVATION**  
1:100



- (D) EXTERIOR DOOR ASSEMBLY  
3010 METAL FRAMED COMMERCIAL GLAZING  
DOOR SLAB c/m  
TRANSOM GLAZING UNIT AND JAMB SET  
SELF-CLOSING HINGE  
LATCHSET  
DEADBOLT  
ACCESSIBLE POWER OPENER
- (W) WINDOW ASSEMBLY  
3-3046 METAL COMMERCIAL FRAME  
THERMAL BROKEN GLAZING UNIT  
(ONE COMPLETE UNIT)

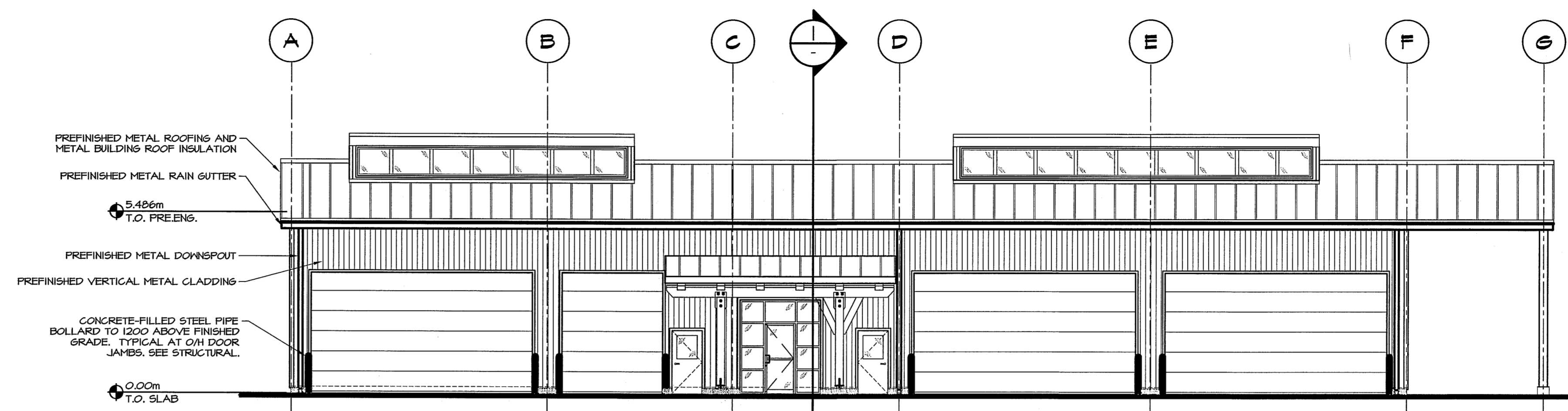


**BUILDING SECTION**  
1:100

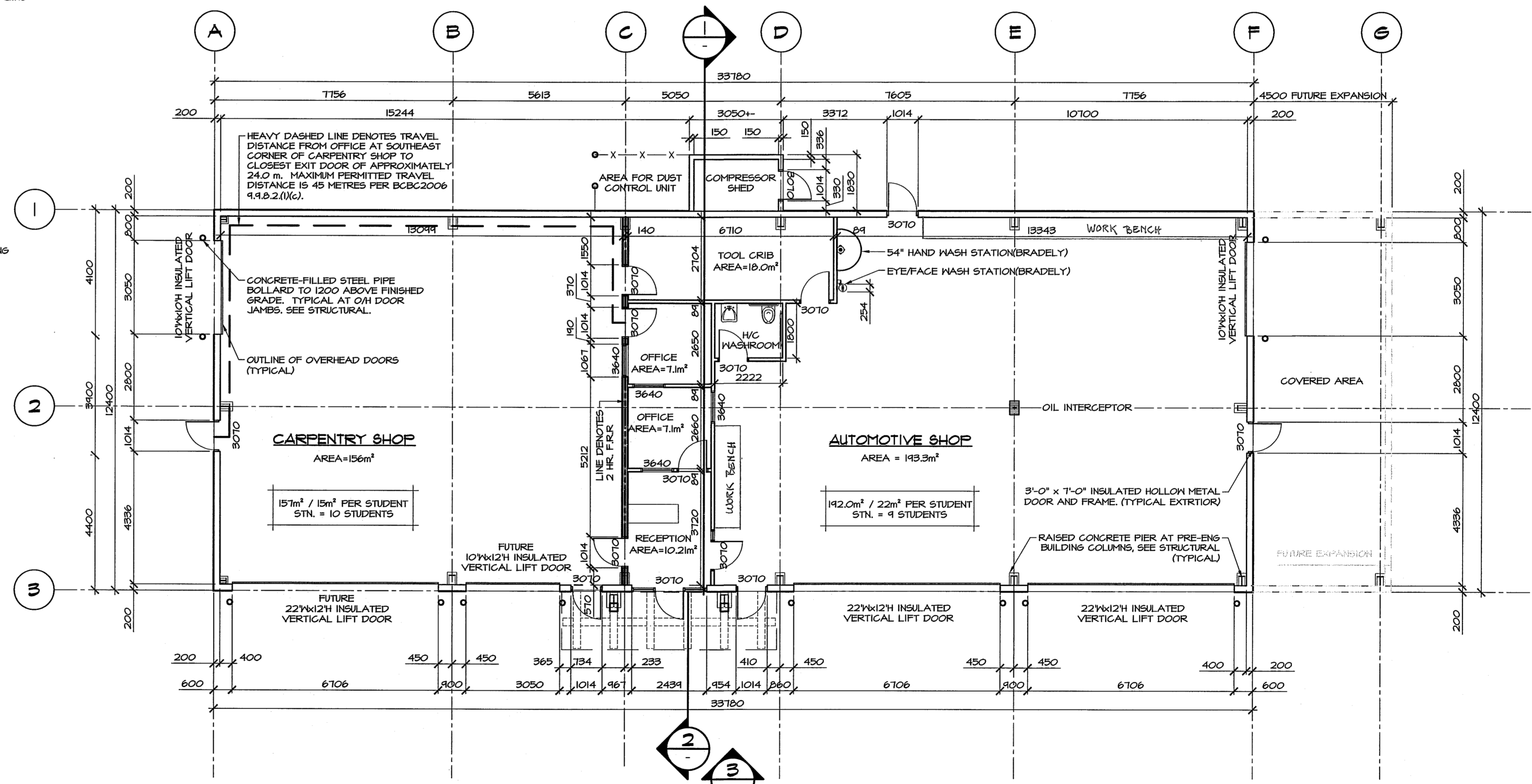


**2 DETAIL**

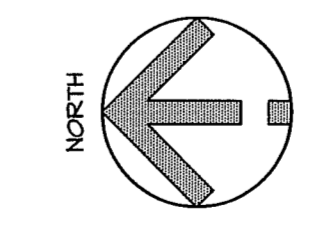
**3 CANOPY ELEVATION**



**WEST ELEVATION**  
1:100



**FLOOR PLAN**  
1:100



2 2010.03.02 CLIENT REVIEW  
 1 2010.02.02 CLIENT REVIEW  
 No. DATE made ISSUED FOR

**HEROLD ENGINEERING LIMITED**  
 Consulting Engineers  
 3701 Shenton Rd, Nonalmo, BC V9T 2H1  
 Tel: 250-751-8558 Fax: 250-751-8559  
 Email: mail@heroldengineering.com  
©Copyright reserved. This drawing remains the exclusive property of Herold Engineering Limited and may not be reused or reproduced without written consent of Herold Engineering Limited.

**TRADE FACILITY - CARPENTRY AND AUTOMOTIVE SHOPS**

**VIU - POWELL RIVER CAMPUS, B.C.**  
 VANCOUVER ISLAND UNIVERSITY

**FLOOR PLAN, ELEVATIONS AND SECTION**

DESIGNED ES	ENGINEERS SEAL
DESIGN REVIEW -	
DRAFTED POZ	
DRAFTING REVIEW -	
PROJECT No. 0029-116	DATE 2010.01.28
SCALE AS SHOWN	SHEET 2 of 2
DRAWING No.	REV 2

**A200**