




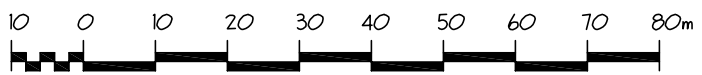


LEGEND:

-  PEDESTRIAN CIRCULATION
-  VEHICULAR CIRCULATION
-  FIRE LANE
-  CONNECTIONS TO CAMPUS
-  ENTRY POINTS

BUS DROP-OFF

RESTRICTED ACCESS - BUSES & FIRE TRUCKS ONLY



SITEPLAN - OPTION 3

MALASPINA UNIVERSITY COLLEGE ICSS&CCH

JENSEN CHERNOFF THOMPSON ARCHITECTS

SK-5

SCALE: 1 : 100

DATE: 21 FEB 2008

CTA PROJ. NO.: 26017

JCA PROJ. NO. 0609

DRAWN BY: XX

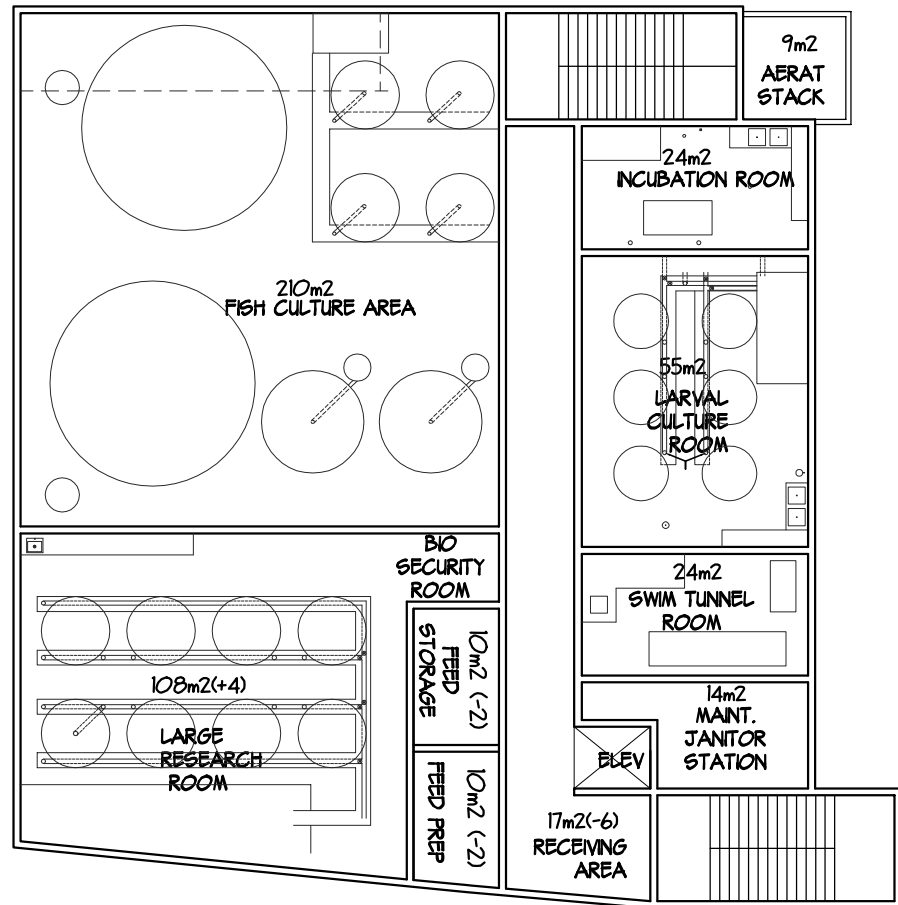
ADVANTAGES:  
 -VERY COMPACT 2 STORY SOLUTION  
 ON TIGHT LOT  
 -CLOSE TO EXISTING SERVICES

DISADVANTAGE:

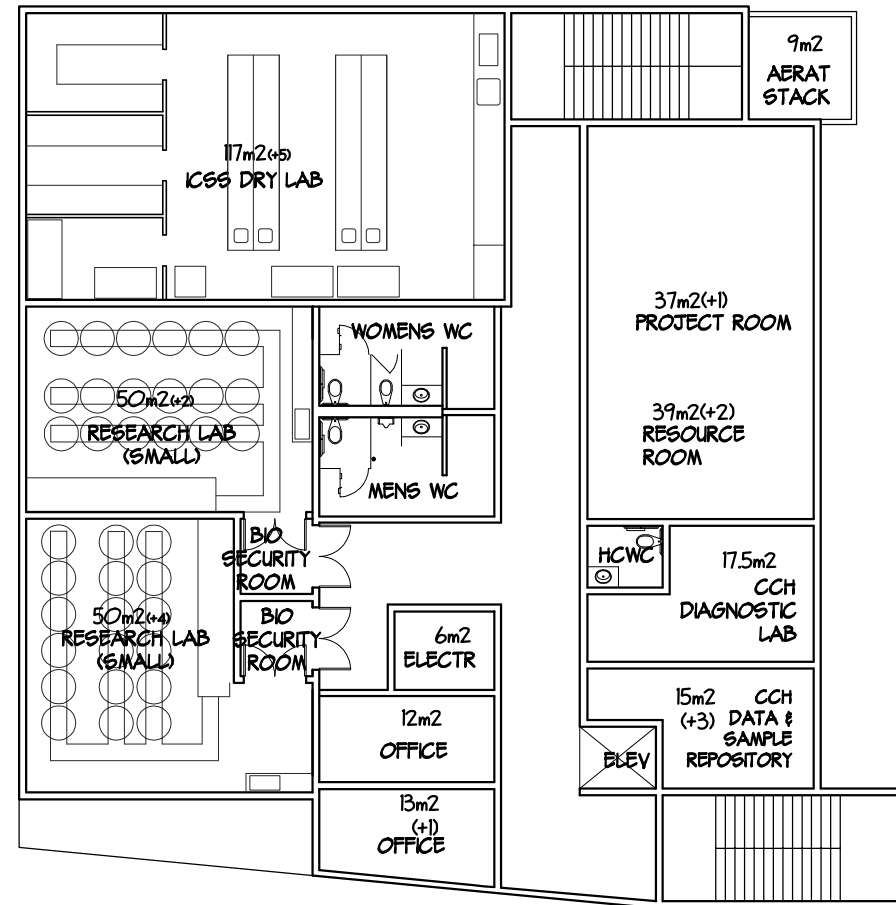
- NO FUTURE EXPANSION
- WET LABS GO UPSTAIRS
- FEW PLAN OPTIONS DUE TO SIZE
- 5M HIGH SPACE DUE TO LIMITED STAIR LENGTH.
- EXTRA COST DUE TO STAIRS AND ELEVATOR
- MECH ROOM TO GO ON ROOF
- EXISTING TANK NEEDS RELOCATING
- NO LOBBY AT NORTH SIDE

NOTE:

45m<sup>2</sup> MECH. ROOM  
 (TO GO ON ROOF)



FIRST FLOOR



2ND FLOOR

TOTAL AREA = 1154 SQM