



Malaspina University-College
First Nations Student Services Centre
Nanaimo Campus
Newsletter Vol. 3, Issue 9 (December 2006)



**FIRST NATIONS STUDENT SERVICES WILL BE CLOSED FROM
2:00 PM DECEMBER 22, 2005 TO 8:00 AM JANUARY 2, 2006**



**** SNOW CLOSURE PROCEDURE ****

The decision to close the Nanaimo campus due to poor weather conditions will be made by the President; closure of regional campuses is decided by Campus Principals.

In case of closure of the Nanaimo campus, messages will be carried at the main switchboard, (250) 753-3245, and will be cast on Vancouver Island radio stations as follows:

- WAVE 102.3 FM (Nanaimo), WOLF 106.9 FM (Nanaimo), CHLY 101.7 FM (Nanaimo), BEACH 88.5 FM (Parksville), SUN 89.7 FM (Duncan), CJAV 1240 AM (Port Alberni), CHQB 1280 AM (Powell River) or
- Malaspina website: <http://www.mala.ca/index.asp>

Important Dates:

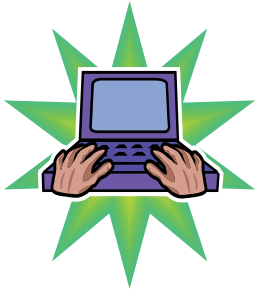
- **4 December (Monday):** Last day of classes for University and Career/Technical Programs.
- **5 December – 6 December (Tuesday – Wednesday):** Final examination study days for University and Career/Technical Programs.
- **7 December (Thursday):** First day of final examinations.
- **15 December (Friday):** Convocation Ceremony for Bachelor's degrees.
- **18 December (Monday):** Last day of final examinations.
- **27 December (Wednesday):** Final Fall semester grades due by 4 pm.
- **25 December – 1 January (Monday – Monday):** Christmas / New Year break.
- **January 2007:**
 - **8 January (Monday):** First day of classes for Spring semester.
 - **15 January (Monday):** Last day of active wait-list. After this date, courses may be dropped over the web or in person, and may be added in person using the Request For Late Course Registration Form.
 - **19 January (Friday):** Last day to add / drop a course before Spring semester tuition calculated.
 - **22 January (Monday):** Tuition calculated. Students in University and Career/Technical Programs will be billed for all courses enrolled in as of this date.

There are some excellent job opportunities available, some of which are working for the Vancouver Organizing Committee for the 2010 Olympic and Paralympics Winter Games (VANOC)!

Be sure to drop by our office (Building 310, Room 101) early to see what's available!



GENERAL INFORMATION



Email Distribution List

If you would like to be on a distribution list to be contacted by the First Nations Student Services Centre regarding upcoming events please email our office: fnss@mala.bc.ca.

Message from Ian Caplette, Aboriginal Representative Malaspina Students' Union

Hello All,

This is just a heads-up to all the FN students and FN staff that the FN Centre is now open for business. For those of you who haven't been down here (Student Union Bldg. 193), we are located next to the Gym and above the pub. My office hours will be as follows:

Fall 2006 Semester:

Mon & Wed : 3:00-4:00

Tues & Thurs : 11:00-12:30

Spring 2007 Semester:

Mon & Wed : 12:00-2:00

Tues & Thurs : 3:00-4:00

As Aboriginal Representative, I work for you. You are all my bosses (students only, sorry staff) so you kinda get to tell me what to do. For those of you who know me you already know that I will follow-up on anything that you need and I am here to help you. If there's something confidential or someone's hassling you, problems with Prof's, students, life... let me know and I can help or provide referrals to other resources. Also, if you just have an idea that needs to be heard or a suggestion for some improvement on campus then pass it along. I love ideas! The more the merrier!

Have a great day...

Ian Caplette
Aboriginal Representative
Malaspina Students' Union, Local 61

Ian is trying to put together a complete list of all FN student's email addresses, if you would like to be on Ian's list, please send him a quick message at: canis173@gmail.com

Sharon, Marie, Dale, Sylvia and Yvonne would like to wish everyone a Merry Christmas and all the best in 2007

