


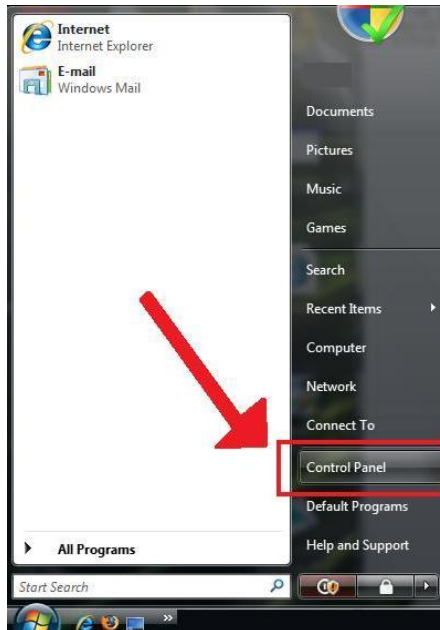
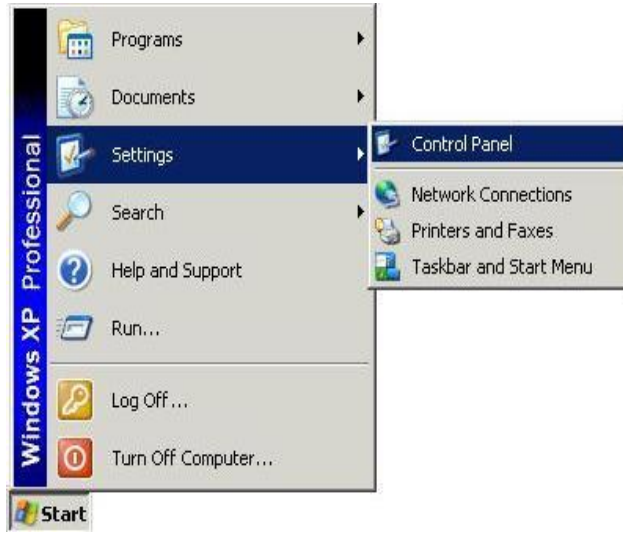


## How to add Trusted Sites to Internet Explorer

- 1) Make sure all programs are closed
- 2) Left-click once on  which is usually located on the bottom left of your screen.
- 3) Next select **Control Panel**. You might need to click on **Settings** before you see **Control Panel**.

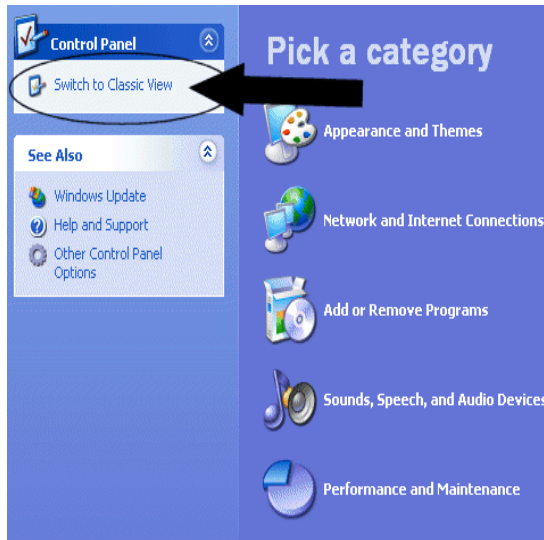


OR



<-(VISTA)

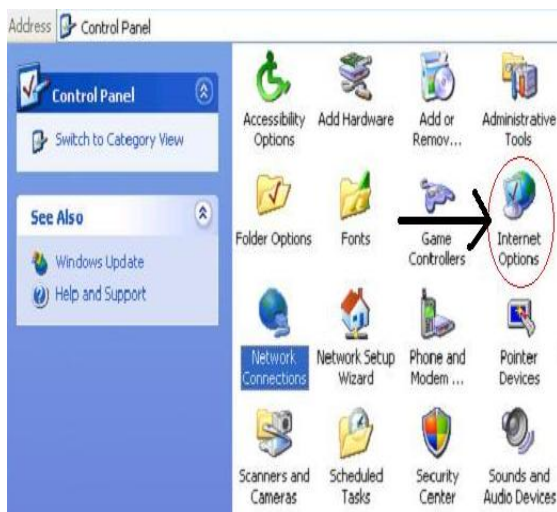
4a) Once Control panel is opened and the following screen, click on **Switch to Classic view**



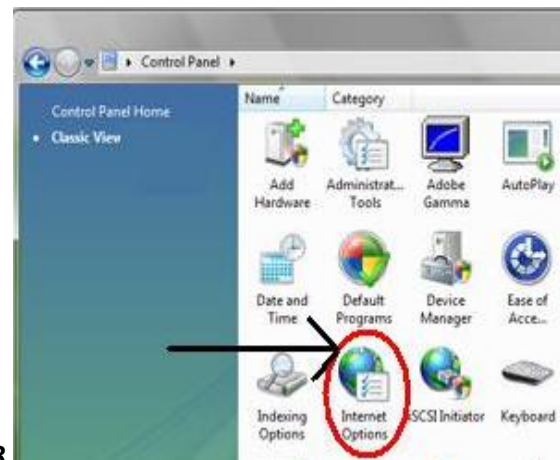
OR



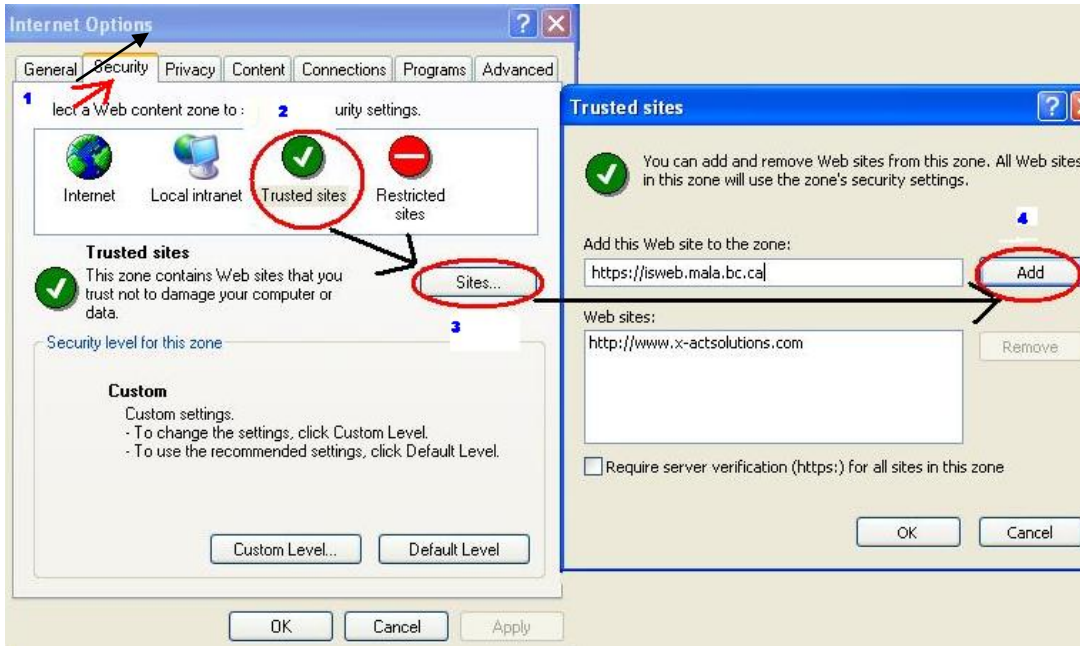
4b) You should now see the complete Control panel. From here we will select **Internet Options**



OR



5) Once you have **Internet Options** screen open select the **Security** tab from the top of the screen.



6)



Once you have the **Security** tab selected click on **Trusted sites** then **Sites...**. Where it says **Add this website to the zone:** type the following: **https://isweb.mala.bc.ca** then select **Add** then **ok**