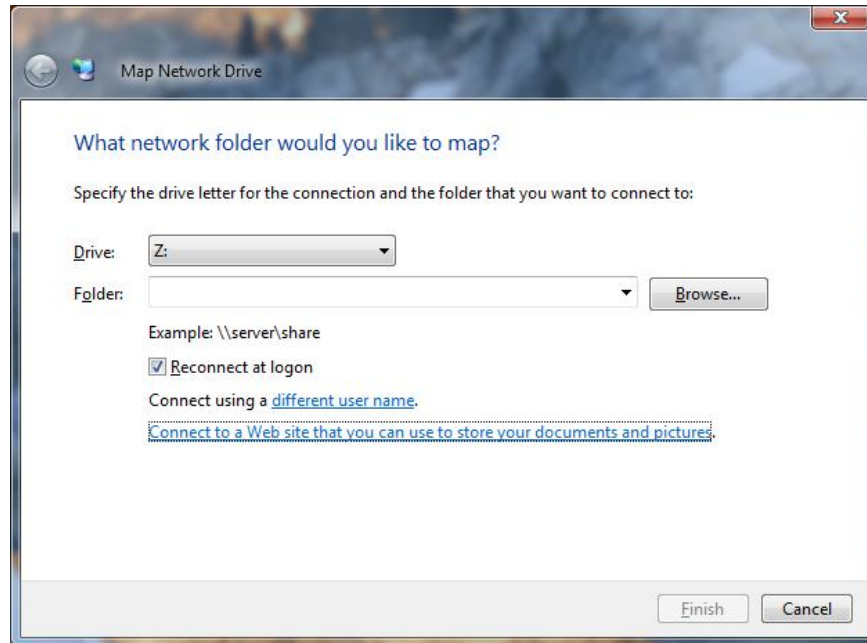


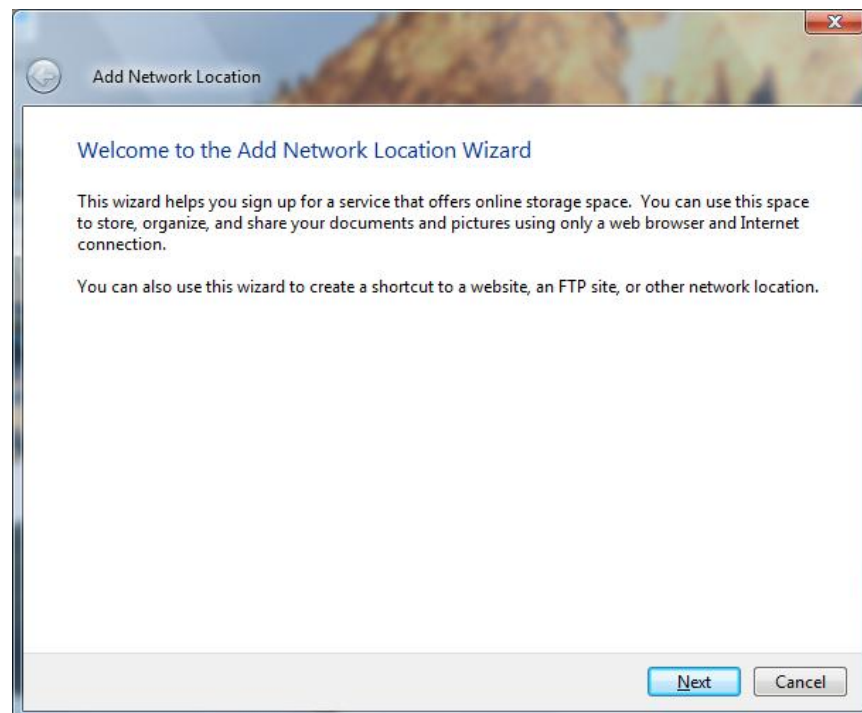


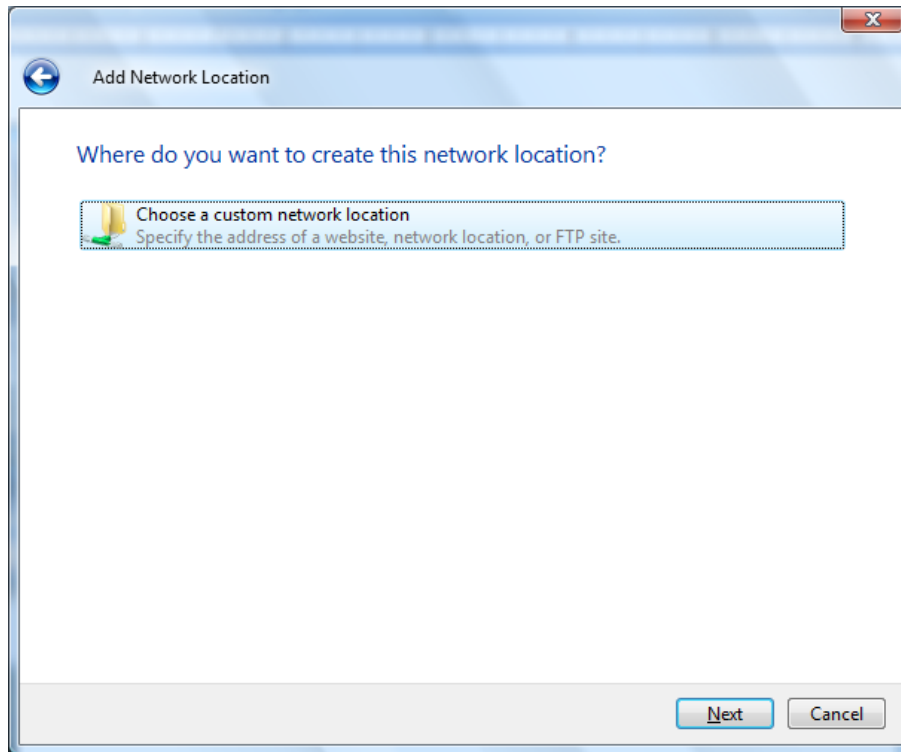
## Remote Access your Student “U” Drive - Windows Vista and Internet Explorer® 8

- Right-click on **My Computer**, click **Map Network Drive...**
- Click **Connect to a Web site that you can use to store your documents and pictures.**

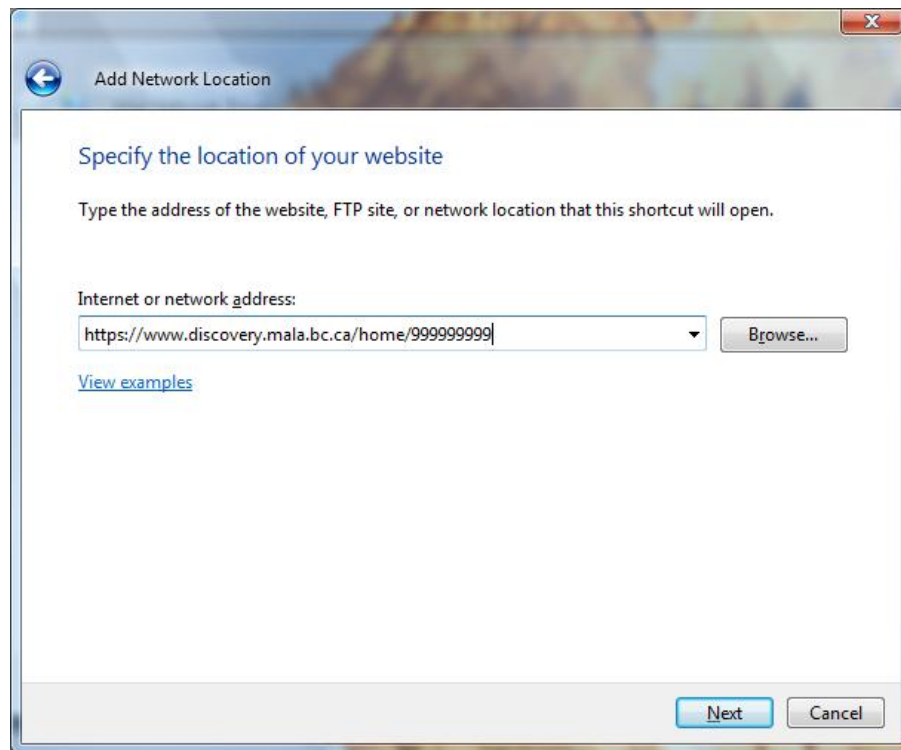


- This starts the **Add Network Location** wizard

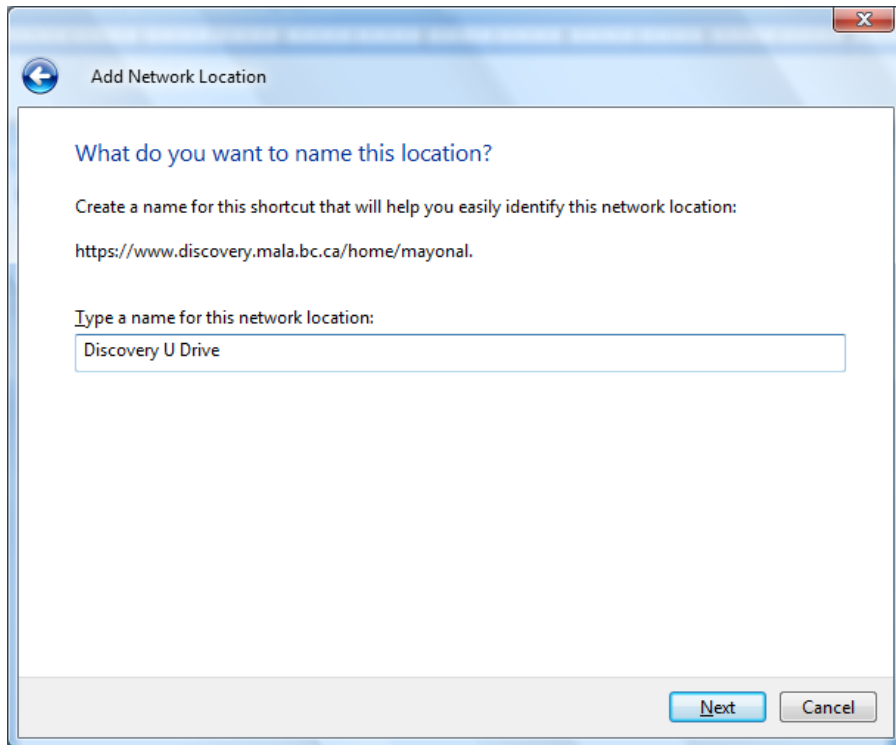




- Type in the web address: **https://www.discovery.mala.bc.ca/home/999999999** replace the 9's with your username



- You will be prompted to enter your credentials when you click **Next**, your username should be in the format **discovery\999999999** - re-enter credentials if prompted twice.



- Type in a friendly name for the location, and click **Finish**

