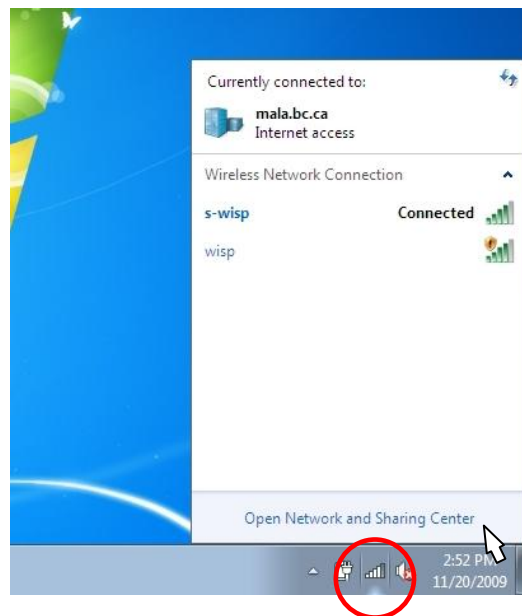




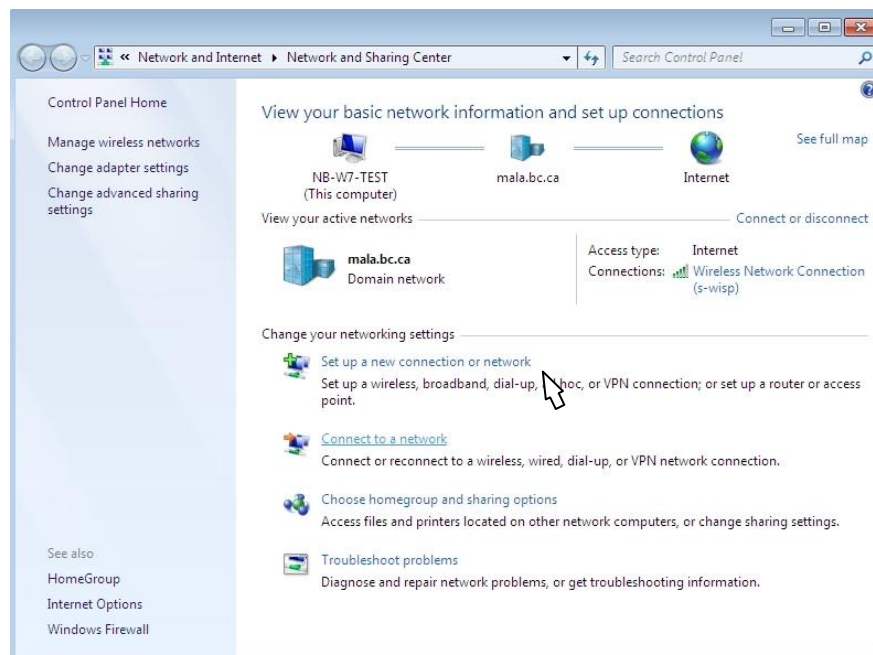
Make a VPN connection with Microsoft Windows® 7

Due to the large number of possible client configurations VIU can only supply limited support for VPN. The instructions use the standard Windows VPN client, Windows Firewall, Symantec Endpoint Anti-virus, and a Router supporting VPN connections. If you experience difficulties, please consult you software and or product documentation. Also see the VIU [VPN Troubleshooting](#) here.

1. First make sure that your computer has a connection to the internet by clicking on the **Network Icon** in the **system tray**. In this case we have connected to the VIU [S-Wisp Wireless Network](#)

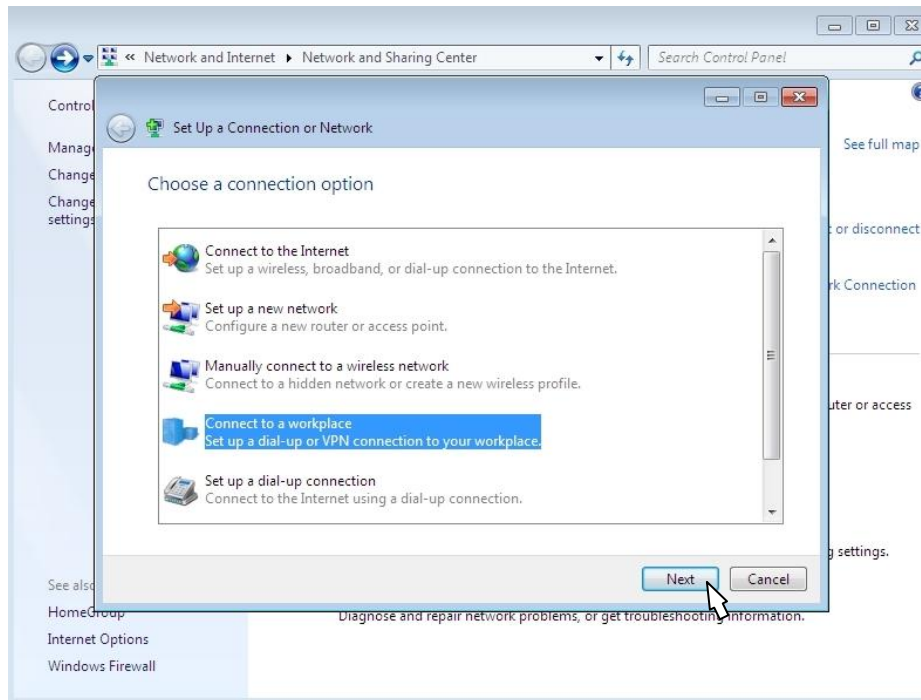


2. Then, Click on **Open Network and Sharing Centre**. On the next screen click on **Set up a new connection or network**

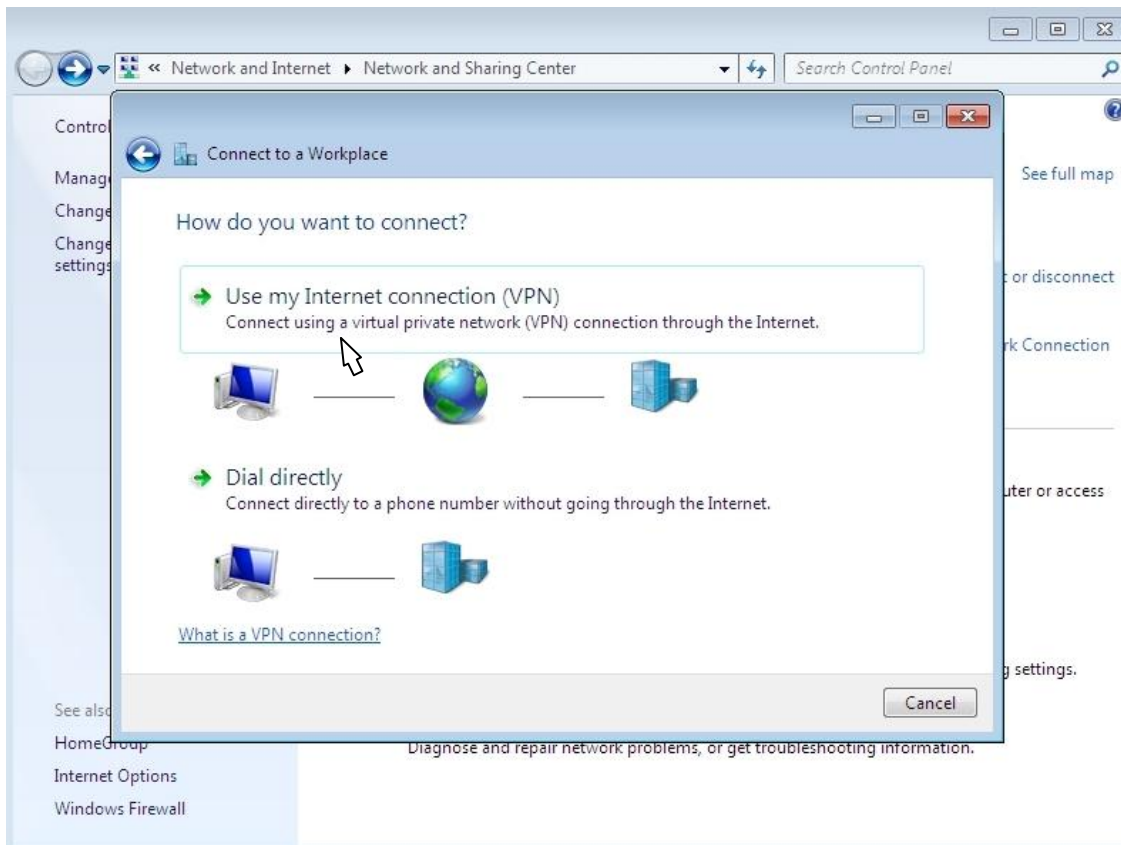




3. Click on **Connect to a workplace**, and then **Next**

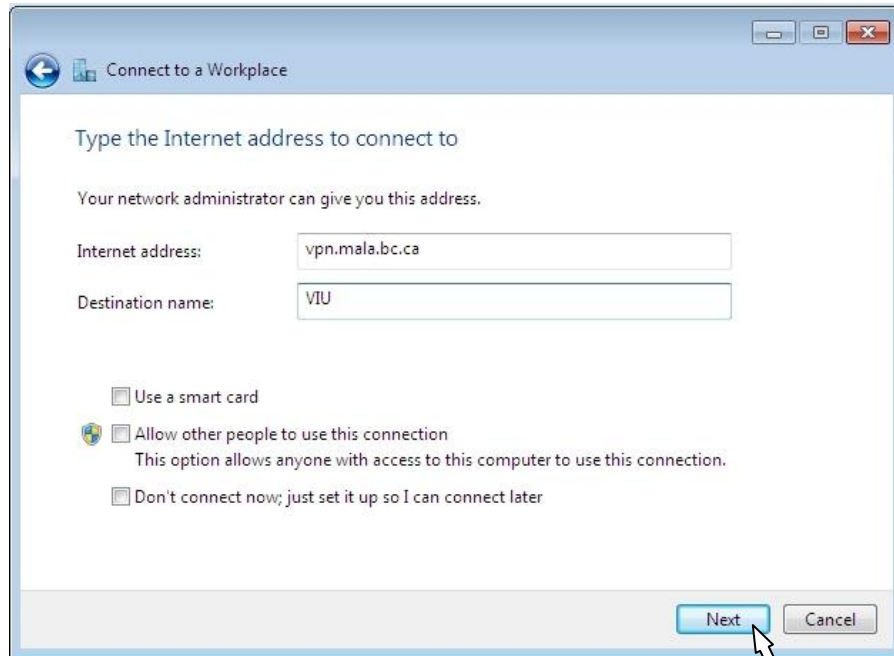


4. Click on **Use my Internet connection (VPN)**

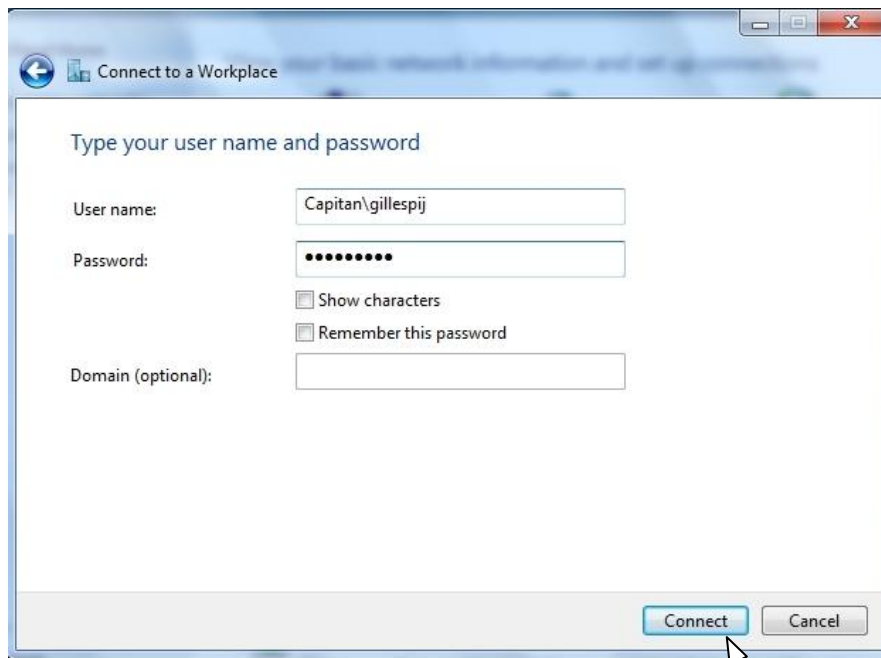




5. Type in the Internet address **vpn.mala.bc.ca**, and a friendly name for the Destination name, and click **Next**

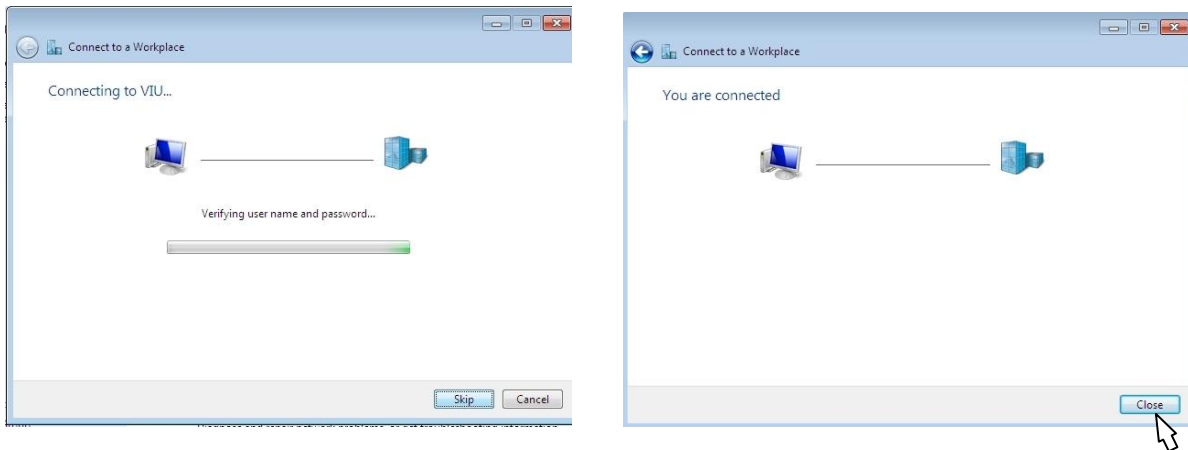


6. Enter your username preceded by Capitan and a backslash \ as in the screen shot, then your username. Click **Connect**





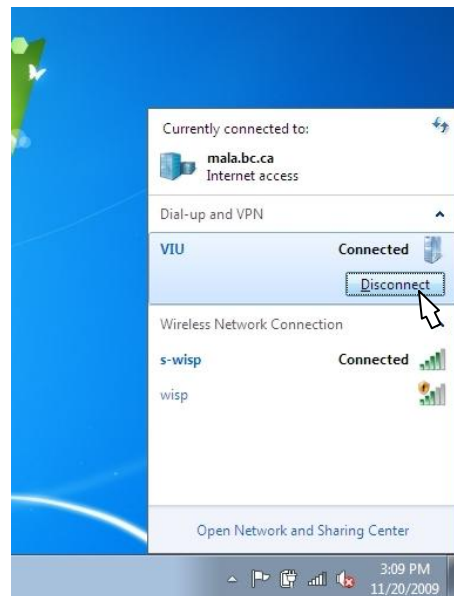
7. The connection progress is shown, click **Close** when the connection is confirmed



8. Click the red **X** to close the **Network and Sharing Centre**



9. To exit VPN click on the **Network** Icon in the system tray, click on the VIU VPN connection and click the **Disconnect** button





- To Reconnect, Click on the **Network** Icon in the system tray, click on the **VPN** connection you created and then click on **Connect**, Type in your username preceded by Capitan and a backslash and your password then click **Connect** - Example: Capitan\gillespij



- If you get a **Set Network Type** box, selecting **Public network** is appropriate for most situations

