

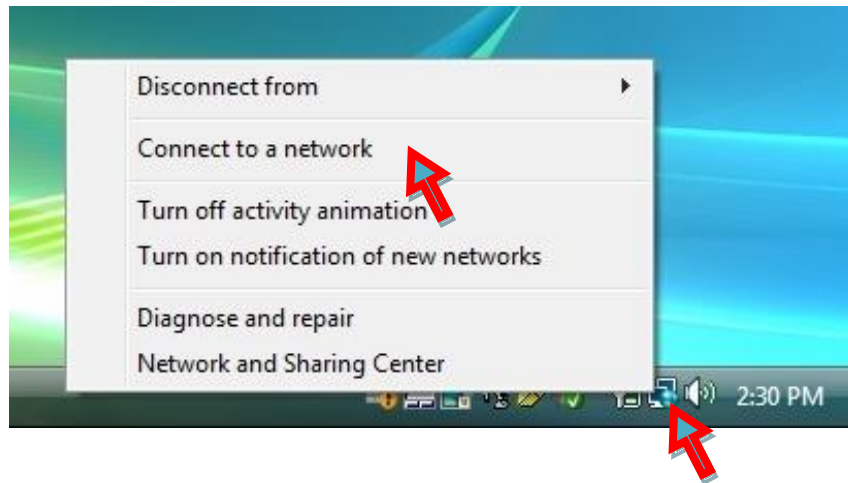


Vancouver Island University

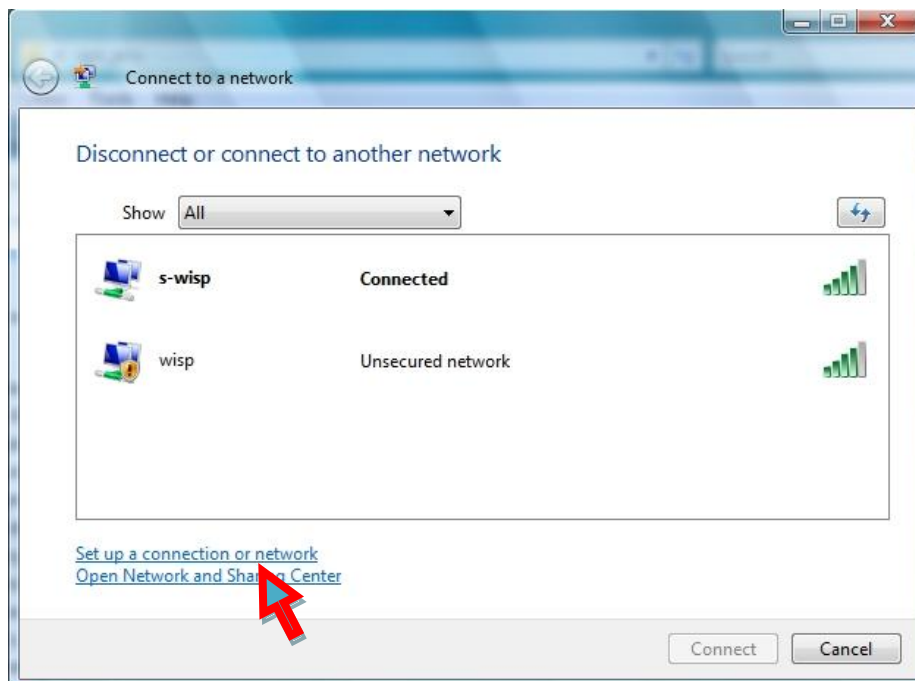
VPN Installation for Windows Vista

Create a New VPN Connection

- Connect to the internet as you normally would
- **Right** click on the connection Icon in the tray and click on **Connect to a network**

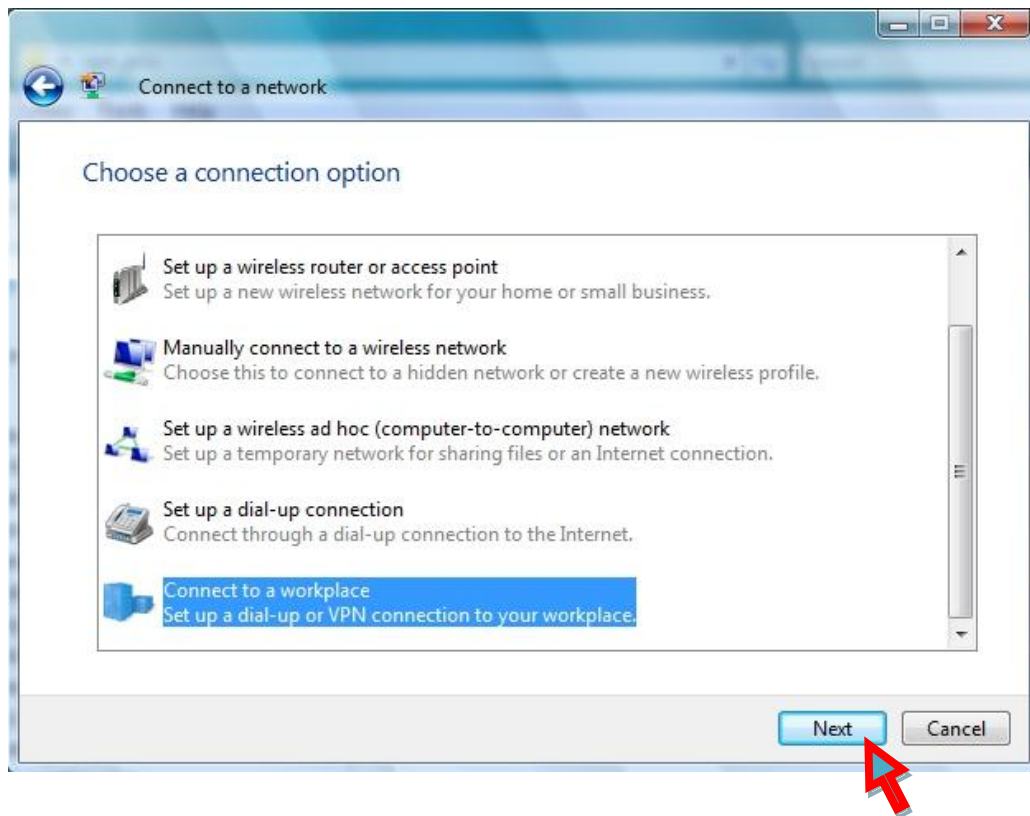


- Click on **Set up a connection or network**

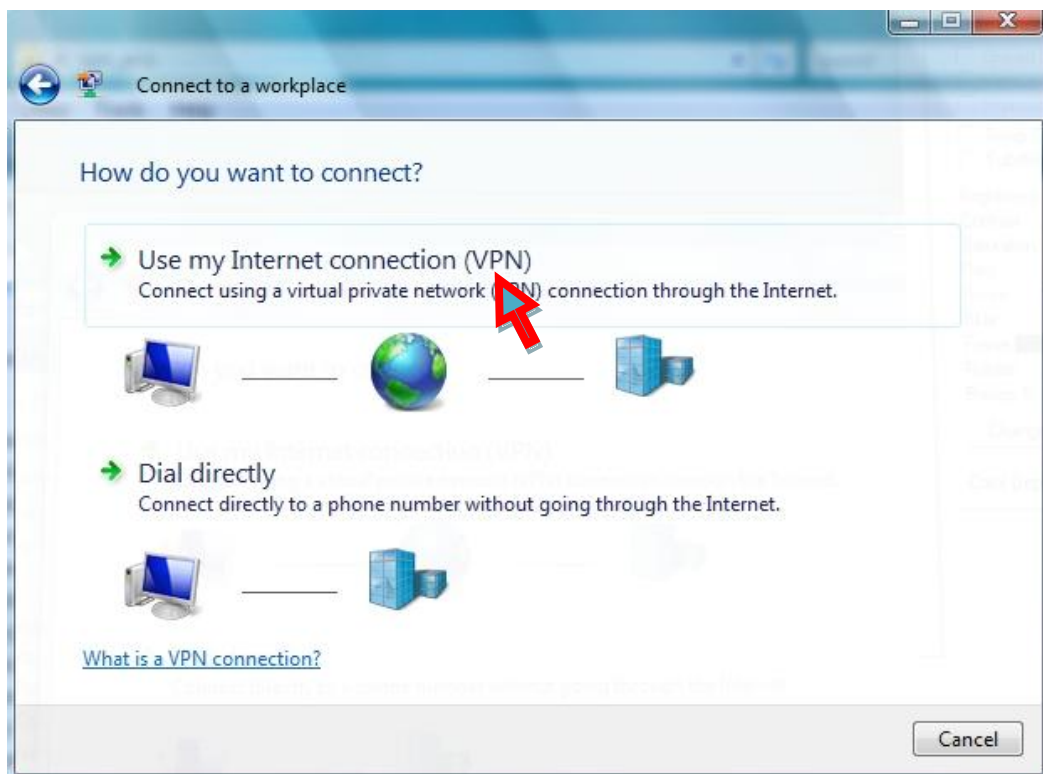




- Select **Connect to a workplace**, click next



- Select **Use my Internet connection (VPN)**





- Type in **vpn.mala.bc.ca** for the Internet address, and a Friendly name for the Destination name I used **Vancouver Island University**

Connect to a workplace

Type the Internet address to connect to

Your network administrator can give you this address.

Internet address:

Destination name:

Use a smart card

Allow other people to use this connection
This option allows anyone with access to this computer to use this connection.

Don't connect now, just set it up so I can connect later

Next Cancel

- Type in your User name: and Password:, precede your username with **capitan** as in the screenshot below, then click the Connect button

Connect to a workplace

Type your user name and password

User name:

Password:

Show characters

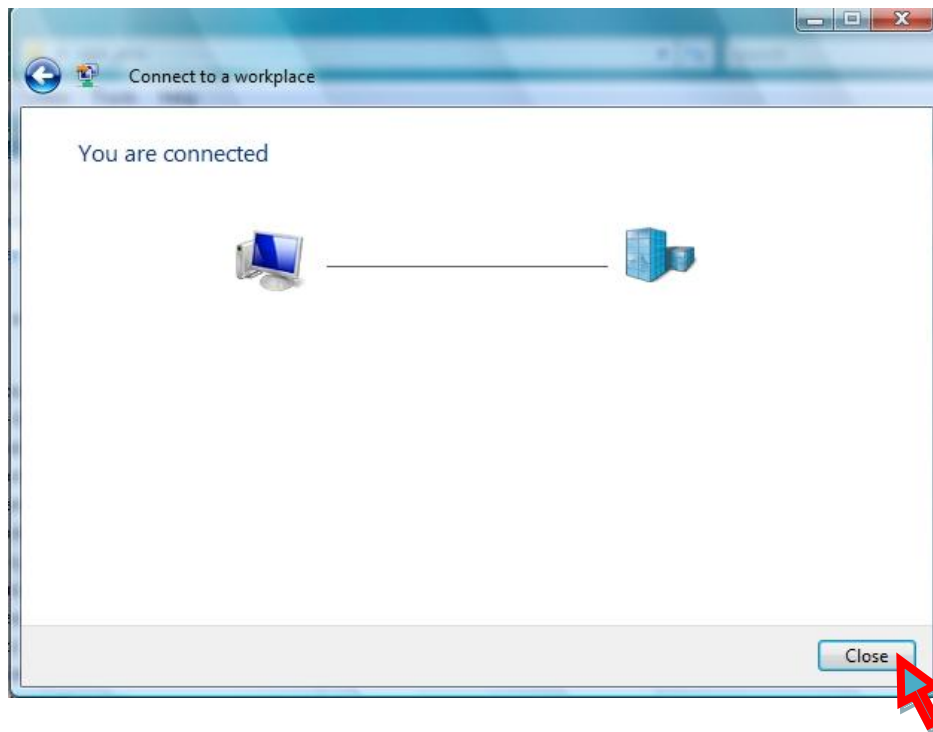
Remember this password

Domain (optional):

Connect Cancel



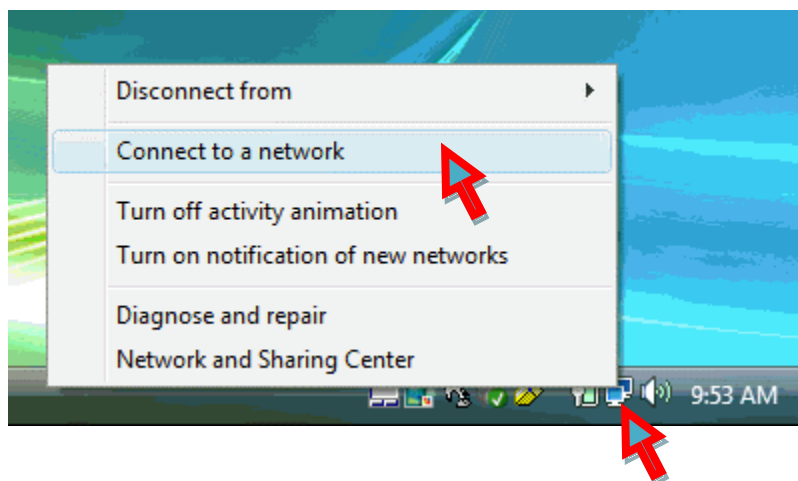
- When the screen says “You are connected” you can click the close button



- You may have an additional screen appear asking about location for security settings, you should answer with the appropriate location before you disconnect from VPN
- **Disconnect** instructions are at the end of the Re-connecting section

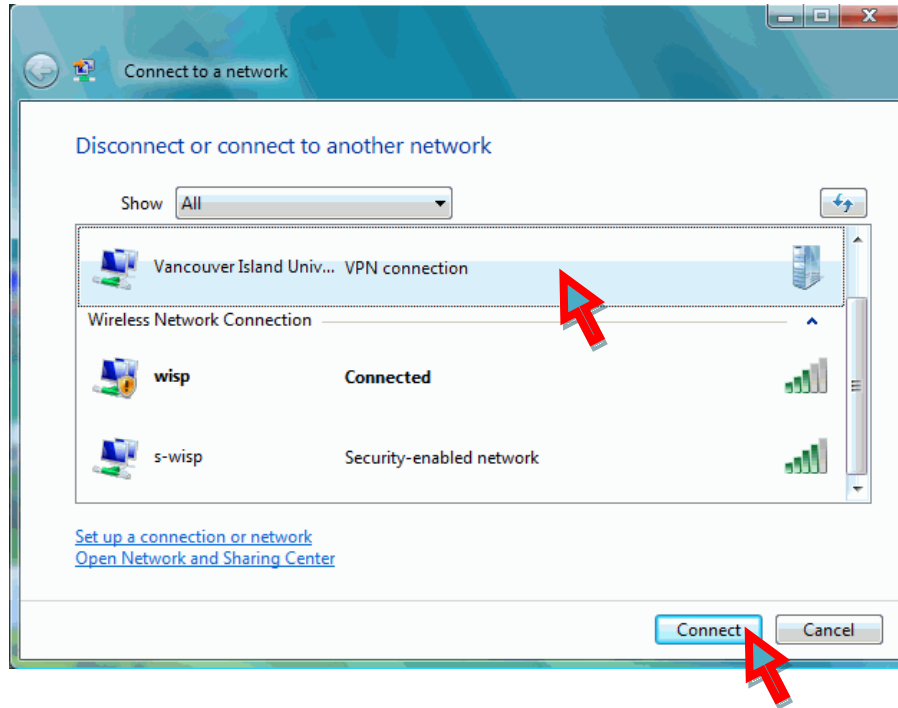
Re-connecting to Vancouver Island University VPN

- Right click on the Network connection Icon in the tray and click on **Connect to a network**

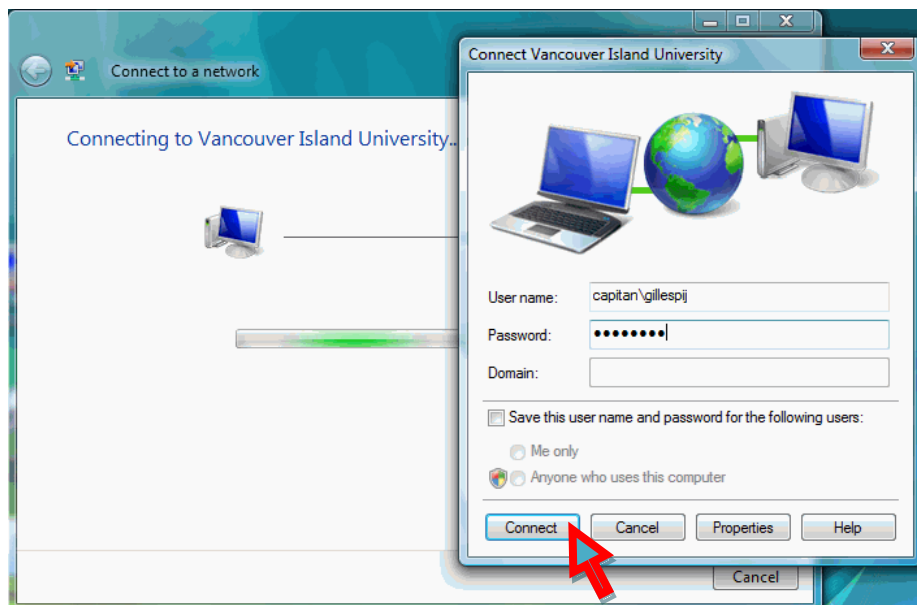




- Click on the **Vancouver Island Univ... VPN connection** and click on **Connect**

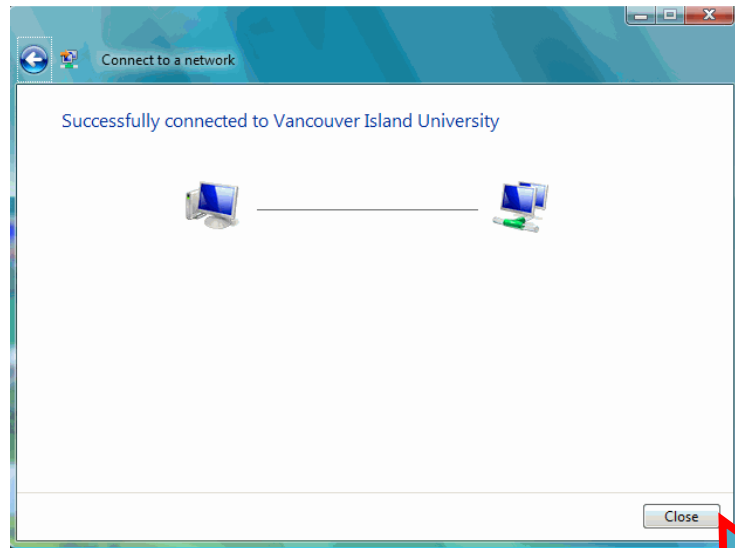


- Type in your User name: and Password:, precede your username with capitain\ as in the screenshot below, then click the Connect button

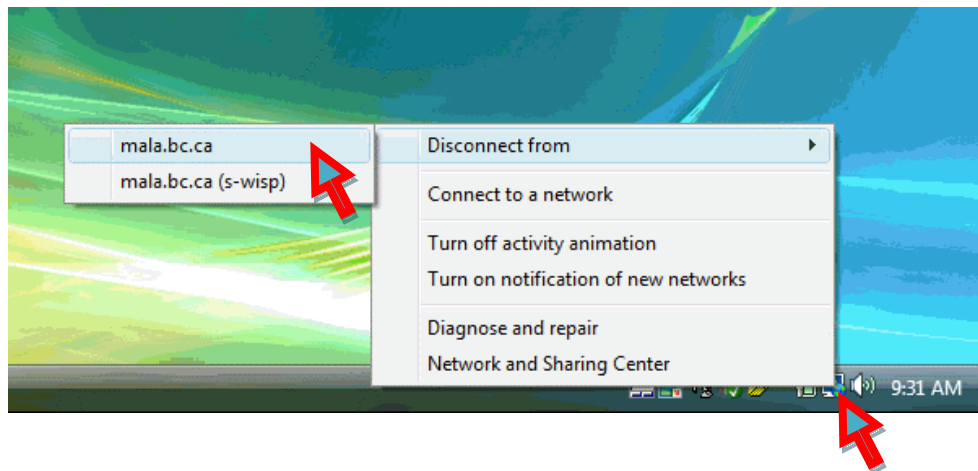




- Once successfully connected you can click the **Close** button



- To disconnect, right click the Network Icon and go to **Disconnect from** and click on **mala.bc.ca** on the fly out menu



Mapping to your U: Drive and Shared Network Drives

Once connected to VPN you can map to your U: Drive or other shared Network Drive. For information go to the VIU Technology Website (<http://www.viu.ca/technology>) and click on Working off Campus → VPN – Virtual Private Networking

Troubleshooting

For information about troubleshooting your VPN connection or problems with mapping to a drive, go to the VIU Technology Website (<http://www.viu.ca/technology>) and click on Working off Campus → VPN – Virtual Private Networking.