

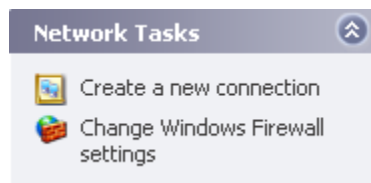


Vancouver Island University

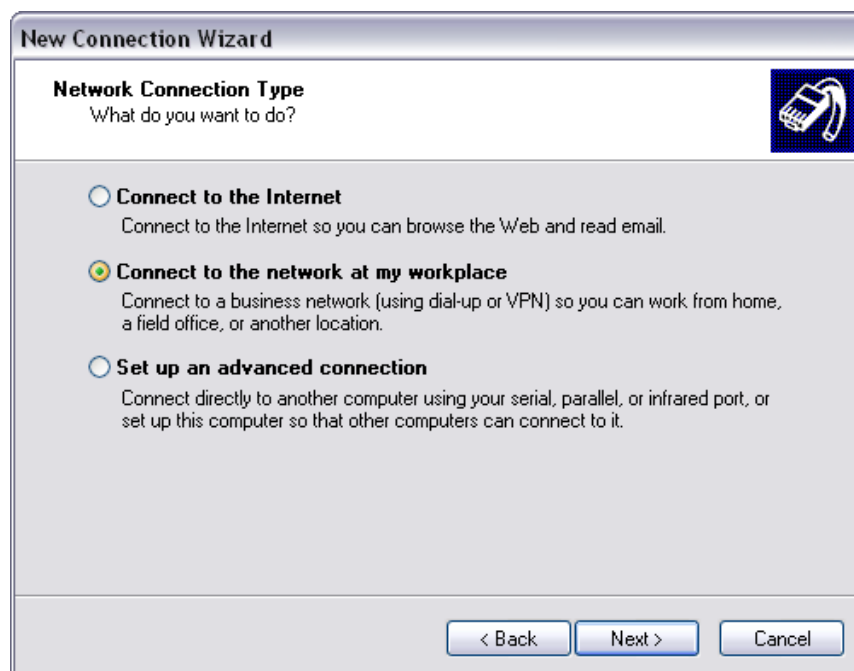
VPN Installation for WINDOWS XP

Create a New VPN Connection

1. Go to Start → Settings → Control Panel (or Start → Control Panel)
2. Open the Network Connections window
 - a. In Classic view select **Network Connections**
 - b. In category view click **Network and Internet Connections** then select **Network Connections**
3. Under Network Tasks click **Create a new connection** – this will start the New Connection Wizard



4. Select **Connect to the network at my workplace**

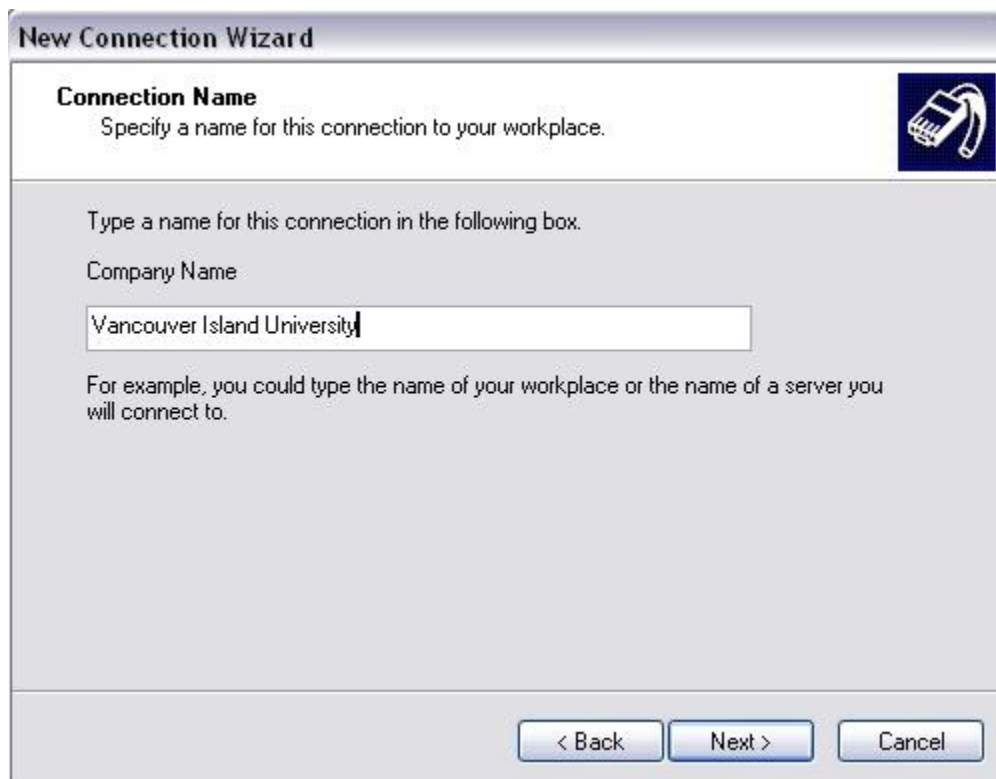




5. Select Virtual Private Network connection



6. Type in a name for this connection (e.g., Vancouver Island University)

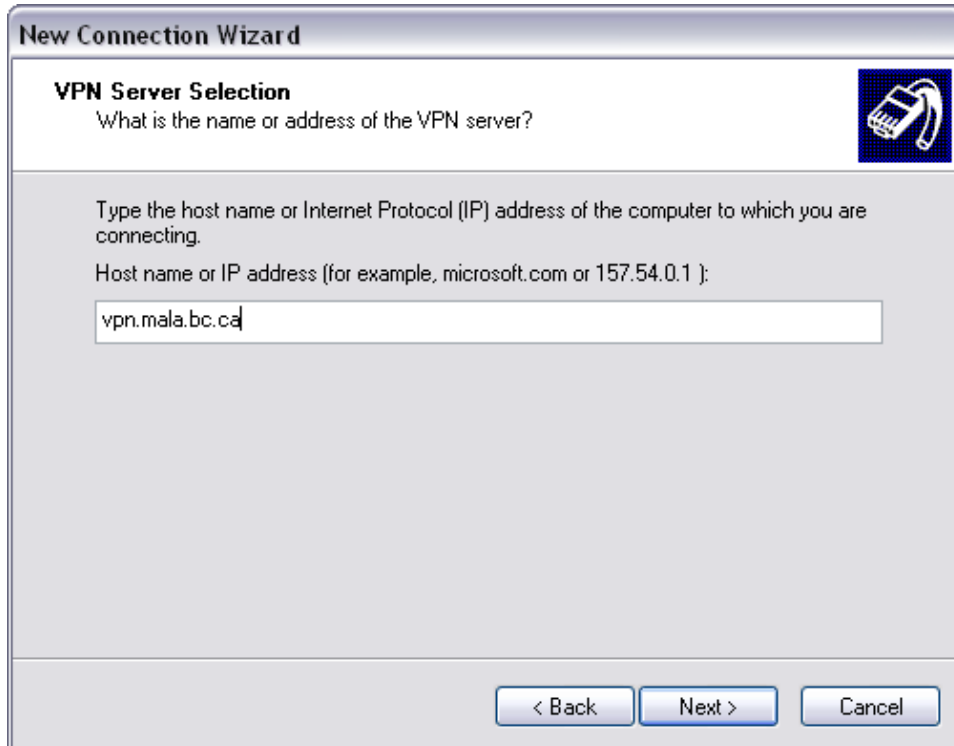




7. Select the **Do not dial the initial connection** radio button (you may not see this window)



8. The Host name for the connection is **vpn.mala.bc.ca**





9. Make this connection available to anyone who uses your computer, or just for your own use



10. Click **Finish** to complete, you can add a shortcut to your desktop for this connection





Configuring your Connection

11. The connection window will open. Do not log in yet, click on **Properties**



12. Click the **Security** tab and confirm that the **Typical [recommended settings]** radio button has been selected





13. Click on the **Networking** tab. The QoS Packet Scheduler is not important, but make sure that **Internet Protocol (TCP/IP)** and **Client for Microsoft Networks** are checked



14. If you are running Windows® XP with Service Pack 2, please proceed to **Step 15** to configure the Windows® Firewall. If you are not running Service Pack 2, click **OK** to close this window and proceed to **Step 19**

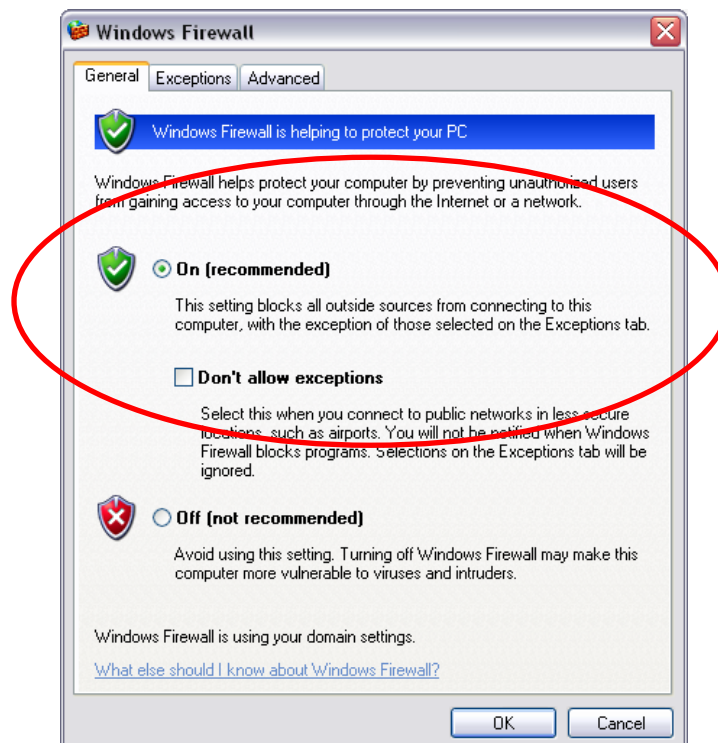


Firewall Set-up instructions for Windows XP® (Service Pack 2)

15. Click on the **Advanced** tab. Under **Windows Firewall** click the **Settings...** button

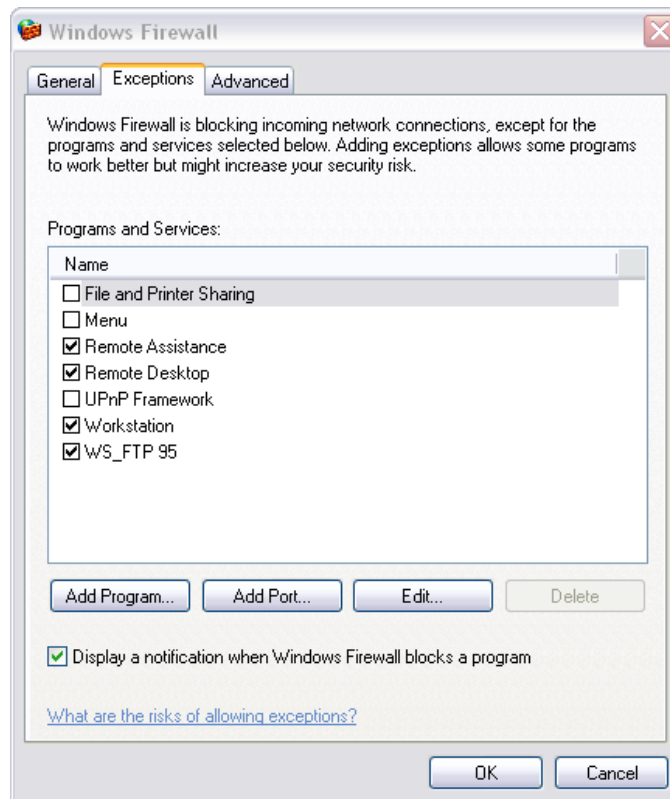


16. Ensure that your Windows® Firewall is turned on

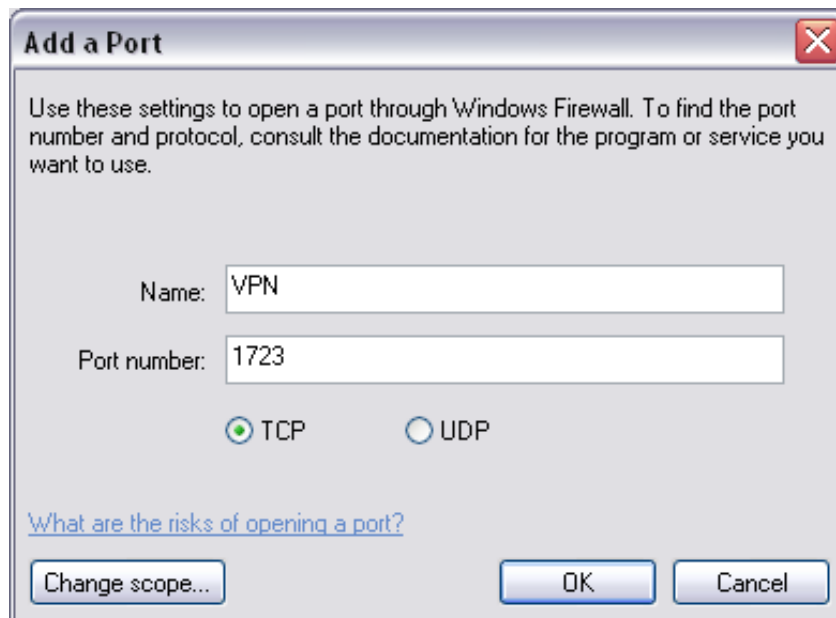




17. Click on the **Exceptions** tab, Click **Add Port...**



18. In the Name field enter **VPN**; in the Port Number field enter **1723**
Choose **TCP** and click **OK**, click **OK** again to save settings and close the Firewall window





Logging into VPN

19. You should be back at the VPN Connection window. Enter your Capitan username and password (you may need to enter capitan\ in front of your username) or the window may have a field for the domain.



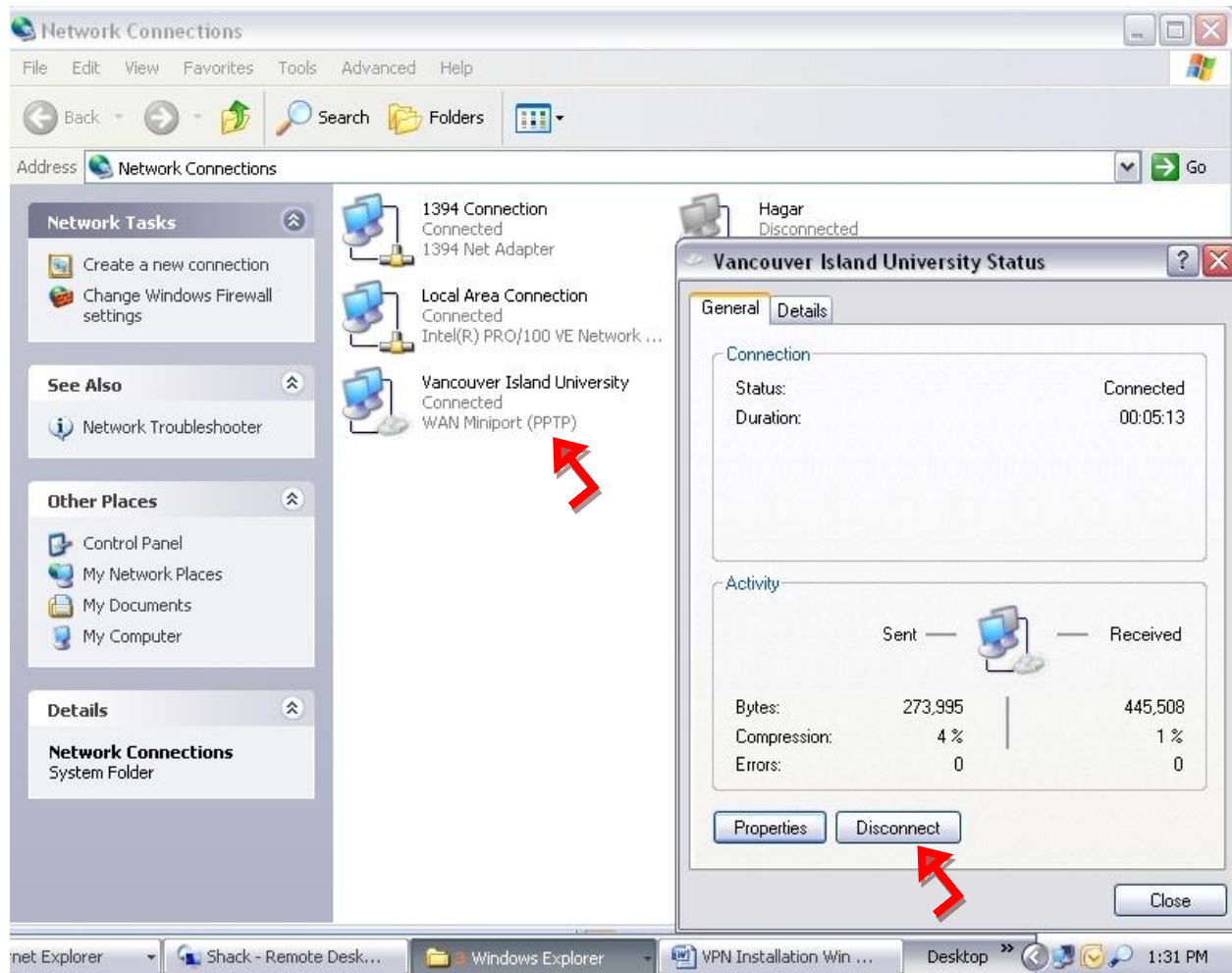
20. You should now be connected. You will see an icon in the system tray indicating an active VPN connection (it looks like two connected PCs). Double-clicking on this icon will bring up the VPN Status window





Disconnect from VPN

Use the **Status** window to disconnect from VPN when you are done. Or you can right-click on the connection and select Disconnect



Mapping to your U: Drive and Shared Network Drives

Once connected to VPN you can map to your U: Drive or other shared Network Drive. For information go to the VIU Technology Website (<http://www.viu.ca/technology>) and click on Working off Campus → VPN – Virtual Private Networking

Troubleshooting

For information about troubleshooting your VPN connection or problems with mapping to a drive, go to the VIU Technology Website (<http://www.viu.ca/technology>) and click on Working off Campus → VPN – Virtual Private Networking.