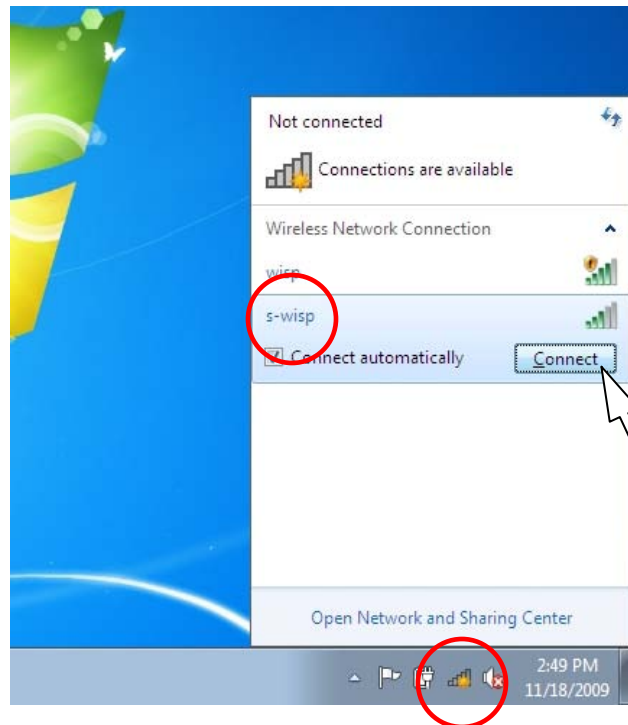




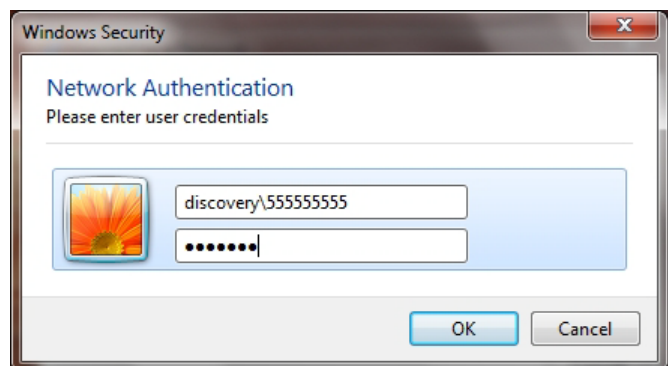
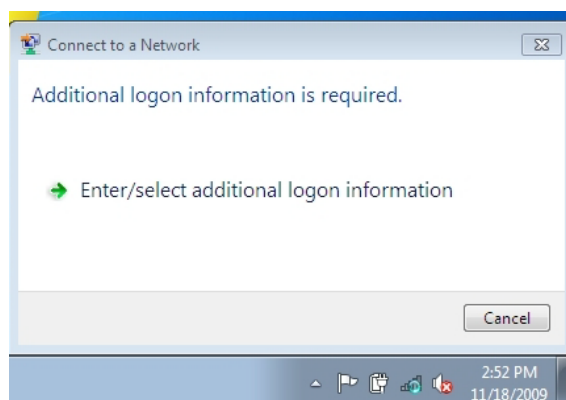
Connecting to S-Wisp on Windows 7

The following instructions depend on Windows managing your wireless connection. If you have a vendor supplied utility, change or disable it to allow Windows to manage your wireless connections.

1. Click On the **Network** Icon on the system tray, click on **S-Wisp** and then click on **C**onnect

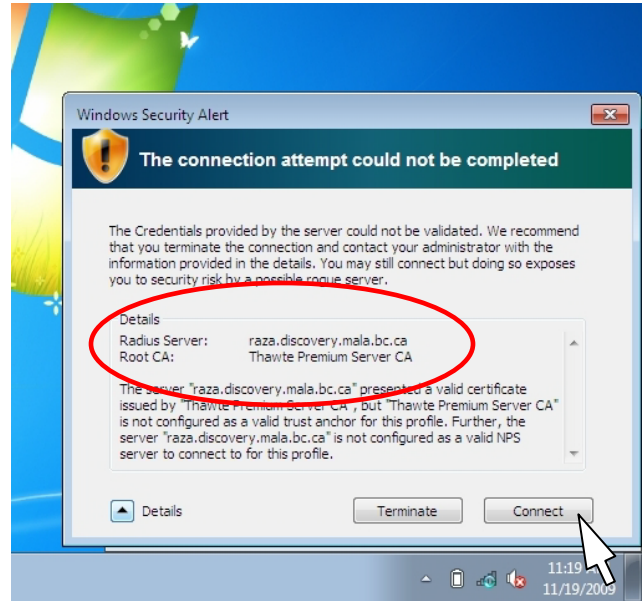
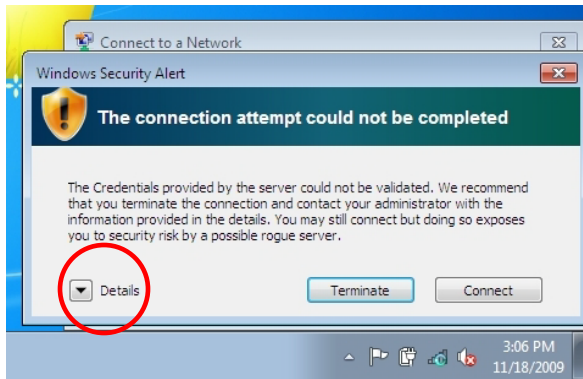


2. You will be asked to log on, format your username like the example below by preceding your username with **Discovery** for students and **Capitan** for faculty and staff, followed by a backslash \ and then your username (no spaces allowed), type in your usual password then click **OK**





3. Windows will present you a security alert, click the **Details** button and ensure that the following 2 items are correct
 - a. Radius Server: raza.discovery.mala.bc.ca or king.discovery.mala.bc.ca
 - b. Root CA: Thawte Premium Server CA



4. Click **Connect** only if the Radius Server and the Root CA match, otherwise click **Terminate**
5. Click on the **Network** Icon on the system tray and confirm that you are connected to S-Wisp

