

# Using the WISP Wireless Network

**Please note:** Malaspina Commons staff have tested the information presented in this guide, and are pleased to offer it to our students and employees as a help resource. The guidance offered in this document is to be executed by the user, at the user's own risk. Because user-owned equipment is subject to variability in capability and configuration, we cannot guarantee connectivity to VIU's network services.

**WISP is an unsecured wireless network** available throughout VIU's Nanaimo and Cowichan campuses. **A secure wireless network, S-WISP, is also available at the Nanaimo campus.** See our Wireless Networking web page at <http://www.viu.ca/technology/general/wireless.asp> for more information about wireless at VIU.

Use of WISP is limited to VIU students and employees, and is subject to the terms and conditions specified in Vancouver Island University's [Policy on Use of Information Technology](#).

To access WISP, you will need an internal or external wireless network card that supports the 802.11b or 802.11g (Wi-Fi) wireless networking standard. Wireless cards (external) are available for loan to VIU students and employees at the Library Service Desk, Nanaimo campus.

## Connecting to WISP

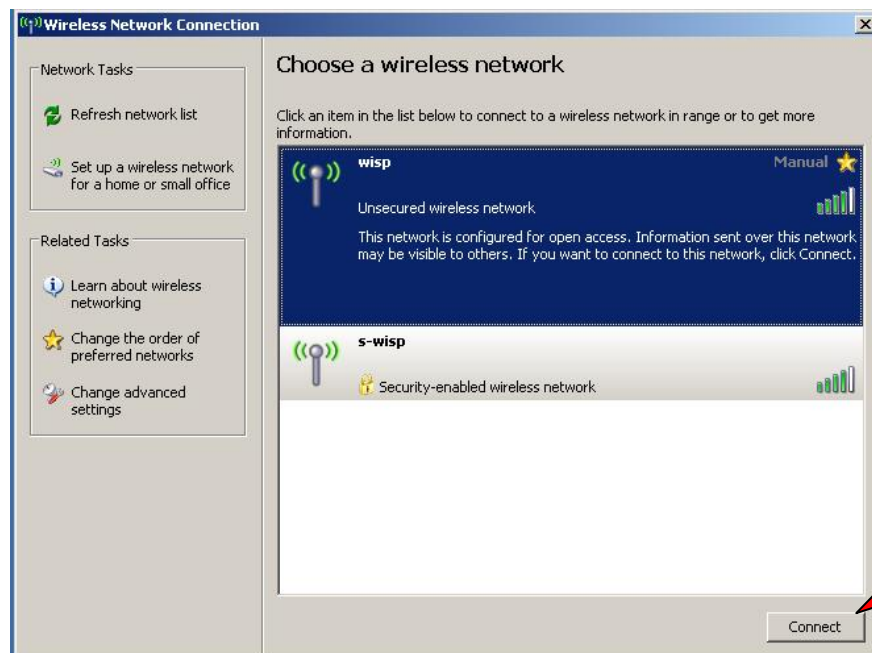
At the Nanaimo campus, your laptop will detect two available wireless networks: WISP and S-WISP. Your computer will not be able to connect to S-WISP without being configured to access the secure network (see the technical guides on the Wireless Networking web page (<http://www.viu.ca/technology/general/wireless.asp>) for help configuring your Windows or Macintosh laptop for S-WISP access.)

**If you are having trouble connecting to the wireless network, it may be that your computer is trying to connect to S-WISP, but is not configured to do so. Try connecting to WISP instead – you should not have to do any special configuration to access WISP.**

Double-click on the wireless icon in your taskbar:



In the list of available wireless networks, click on WISP, and then click the Connect button (you may have to click on and disconnect from S-WISP first before connecting to WISP.)

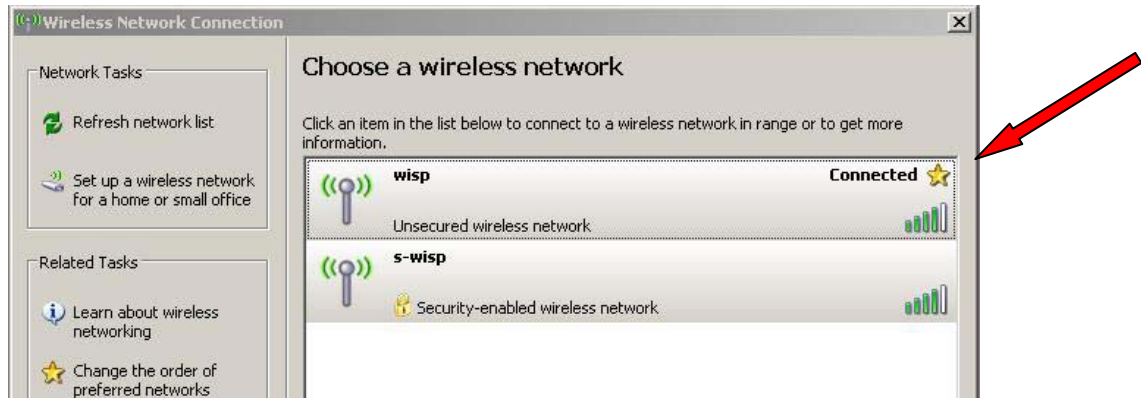


**LIBRARY INFORMATION COMMONS**

After a few seconds of connecting...



...the Wireless Network Connection dialogue box will indicate that you are connected to WISP.



## Logging on to WISP

**Internet Access:** you may access any Internet resource on the Vancouver Island University network (e.g. the VIU web site, the library catalogue) without identifying yourself; however, when you try to access an Internet resource outside the VIU network (e.g. Hotmail, Google, Canada.com, EbscoHost databases in Marlin), **you will be asked to log in to WISP:** Students may log in to WISP with their Discovery account user names and passwords, and employees may log in with their Capitan account user names and passwords.

### WISP Login Required

You have requested a network resource that is not hosted on a Malaspina University-College Web Server. In order to access this resource on the wireless network you must first log-in to the WISP service.

#### NOTE:

For improved performance and security we recommend that you use the Malaspina University-College S-WISP service. For details on setting up and using S-WISP go to: <http://www.mala.ca/technology/general/wireless.asp>

If you are a student you may log-in using your Discovery user ID and password:

Discovery user ID:	<input type="text"/>	Go >>
Password:	<input type="password"/>	

If you are an employee you may log-in using your Capitan user ID and password:  
(If you have been given a WISP user ID and password you may also enter them here)

Capitan user ID:	<input type="text"/>	Go >>
Password:	<input type="password"/>	

## LIBRARY INFORMATION COMMONS

