

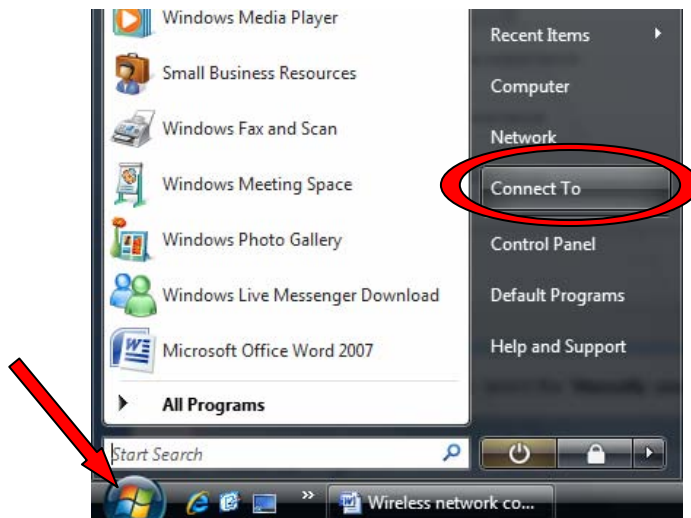
Using the S-WISP Wireless Network with Windows Vista Laptops

S-WISP: Secure. Fast. Reliable

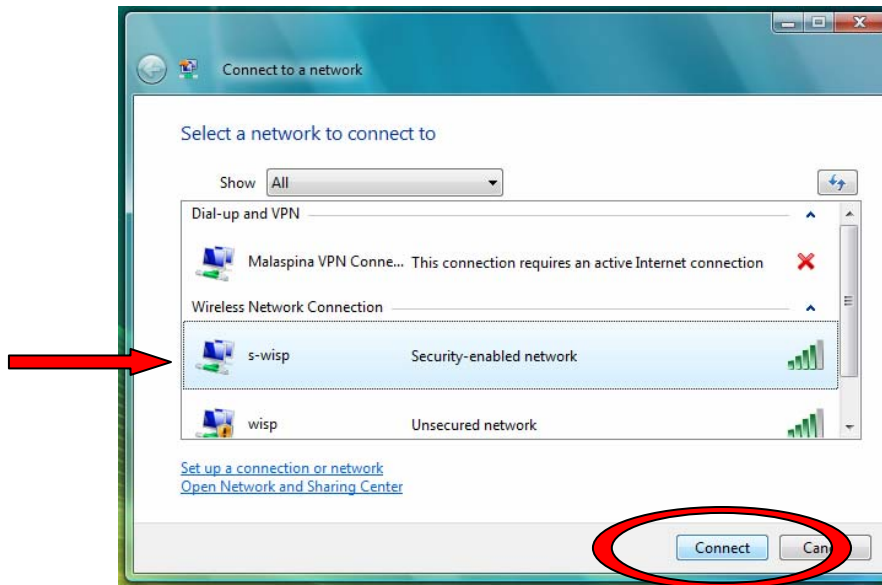
Please note: Malaspina Commons staff have tested the information presented in this guide, and are pleased to offer it to our students and employees as a help resource. The guidance offered in this document is to be executed by the user, at the user's own risk. Because user-owned equipment is subject to variability in capability and configuration, we cannot guarantee connectivity to Malaspina's network services.

Configuring your Windows Vista laptop for the Malaspina S-WISP network should only need to be done once. Use the following steps to configure your Windows Vista laptop.

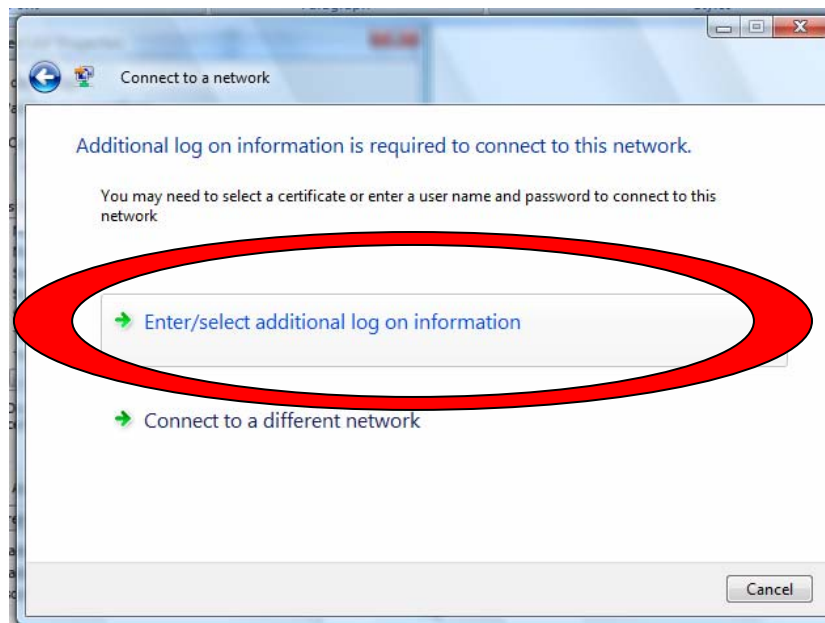
From the Windows Vista Desktop, click the **Start Button** on the lower left side of the Desktop and select **Connect To** from the Start Menu:



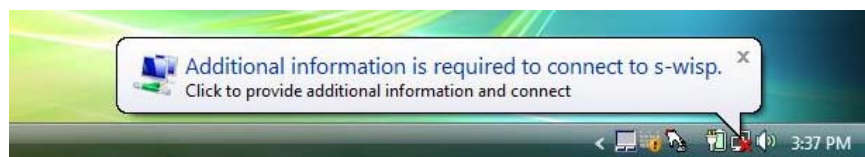
Click once on **S-WISP** to select the network, and then select the **“Connect”** button:



Windows Vista displays the following dialogue box. Click on **“Enter/select additional log on information”**:



OR, you may see a balloon coming from the network icon in the Windows Vista task bar. Click on the balloon:



S-WISP is open only to Malaspina students and employees, who must log in with their network accounts to access the wireless network. In the “Enter Credentials” dialogue box, enter your Discovery or Capitan account information (the username, password and domain for your Malaspina network account), and click OK:

LIBRARY INFORMATION COMMONS

User Name: your Discovery or Capitan computer account username (for student Discovery accounts, this is usually your student number)

Password: the password for your Discovery or Capitan computer account.

Logon Domain: enter the word **DISCOVERY** (for students) or **CAPITAN** (for employees)

Click once on “Enter/select additional log on information”:

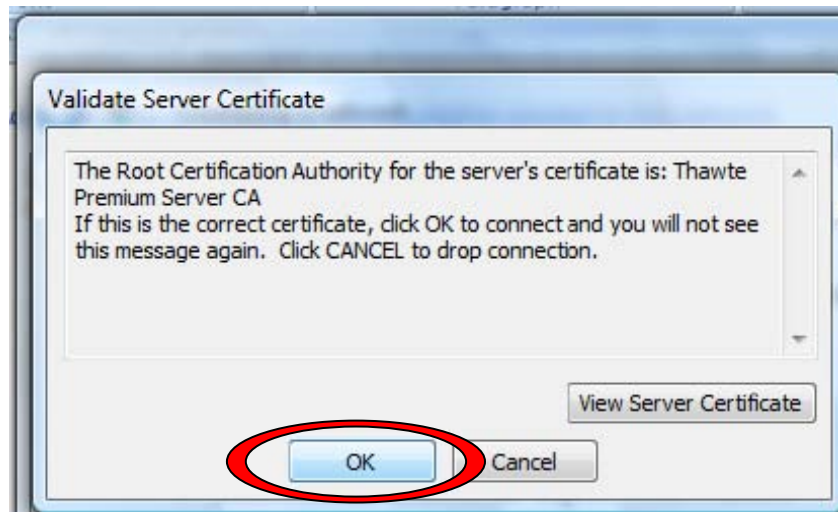
Additional log on information is required to connect to this network.

You may need to select a certificate or enter a user name and password to connect to this network

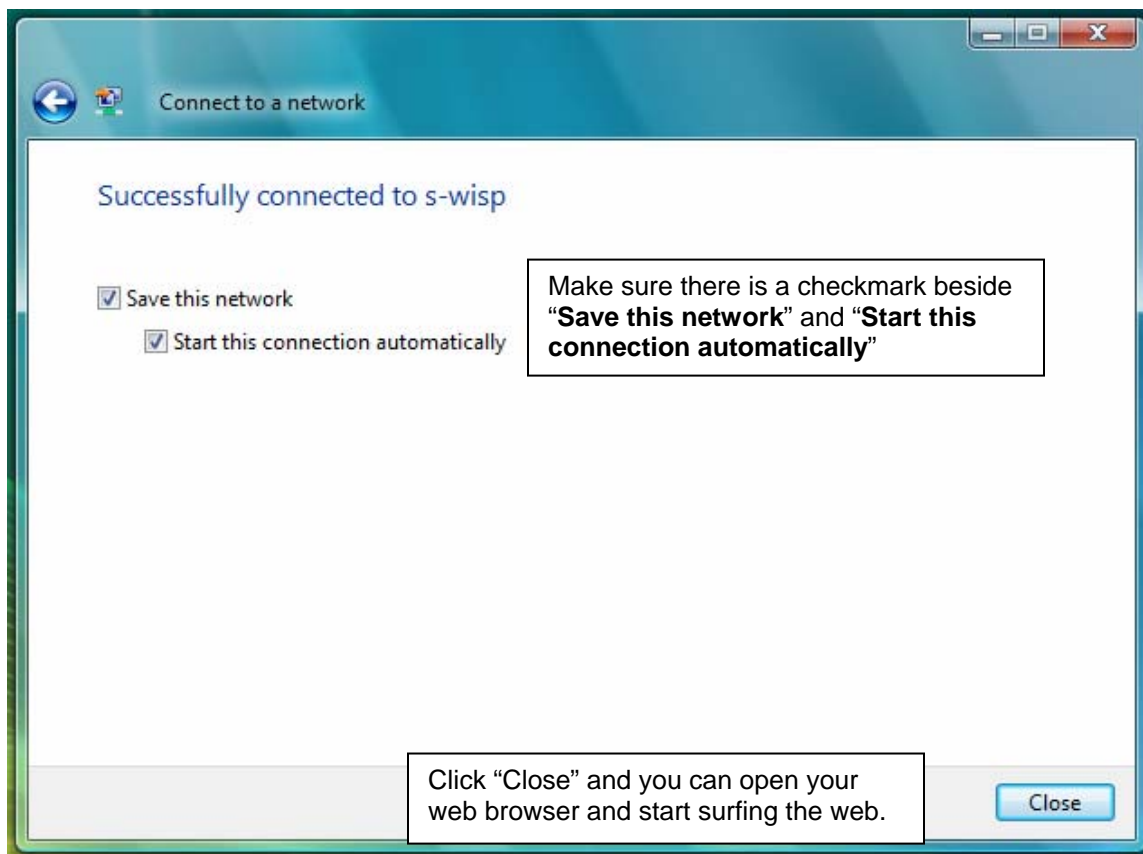
- Enter/select additional log on information
- Connect to a different network

The Validate Server Certificate dialogue will appear. Click “OK” to complete your setup.

LIBRARY INFORMATION COMMONS



After a few seconds, a message will appear stating that you are successfully connected to S-WISP:



NOTE: You should only need to complete this Windows Vista S-WISP wireless configuration once. After you have completed the configuration, when on campus you should be able to power up your laptop and access the Internet via S-WISP without any further configuration.

LIBRARY INFORMATION COMMONS