

Configuring Your Linux Laptop for Wireless Networking

Please note: Malaspina Commons staff have tested the information presented in this guide, and are pleased to offer it to our students and employees as a help resource. The guidance offered in this document is to be executed by the user, at the user's own risk. Because user-owned equipment is subject to variability in capability and configuration, we cannot guarantee connectivity to VIU's network services.

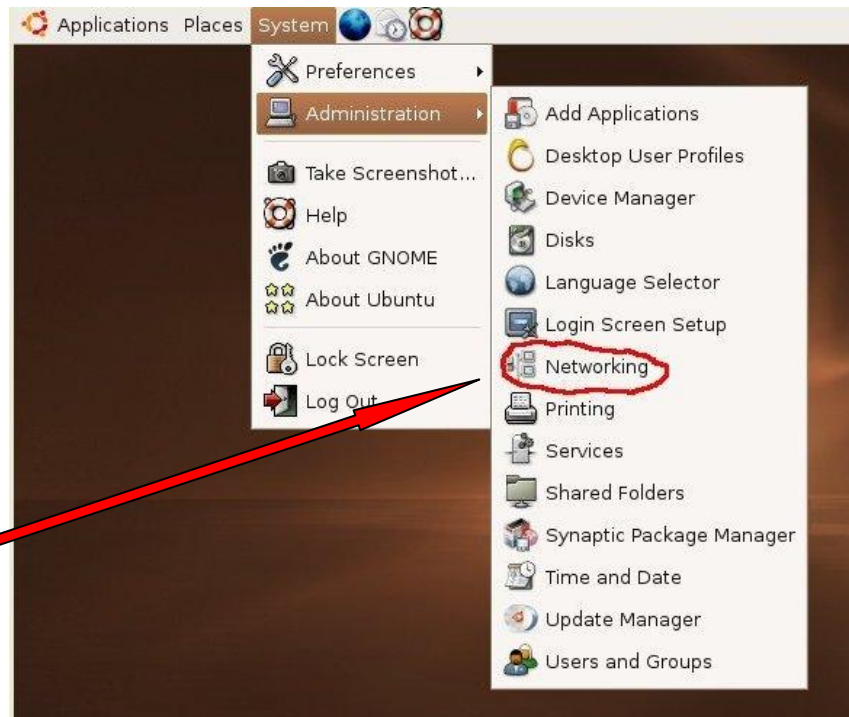
This handout provides the steps to setting up a laptop computer, running the Linux (GNOME) operating system, for wireless access using supported wireless network adapter cards.

Start up the laptop so that you see your Linux desktop.

If you are using an external wireless network adapter, insert the wireless card into your laptop's PCMCIA card slot. Linux will automatically detect the card.

If your laptop has an internal (i.e. built-in) wireless network card, make sure it is switched on.

Run the Network configuration dialog ("Networking") from the System → Administration menu.



In the Network Setting dialog select "Wireless connection" and click "Properties".



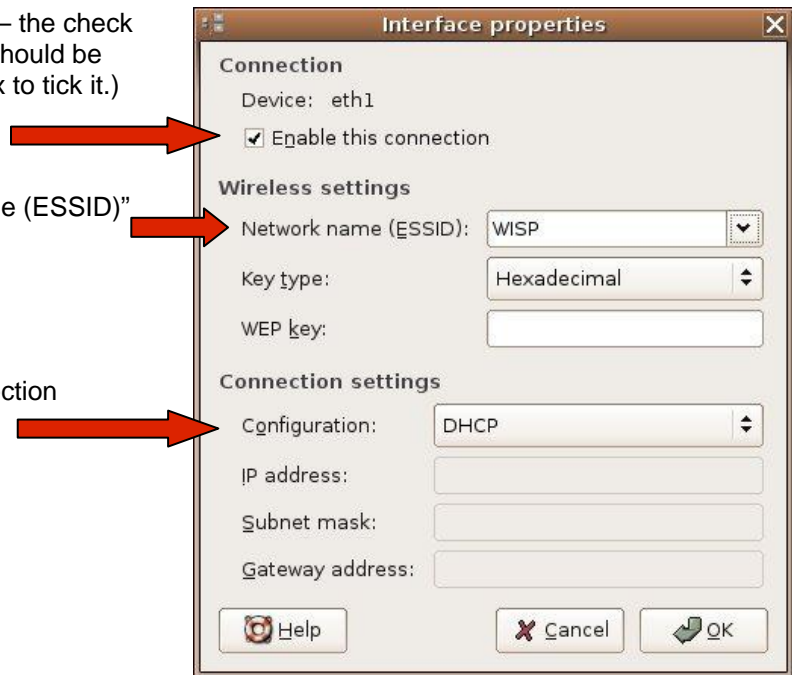
LIBRARY INFORMATION COMMONS

Make sure the connection is enabled – the check box next to “Enable this connection” should be ticked (if it isn’t, click on the check box to tick it.)

Choose WISP from the “Network name (ESSID)” drop-down list.

The Configuration field under “Connection Settings” must be set to DHCP.

Click OK.



Once you return to the Network settings dialogue box, click the “Activate” button.

Click OK to close the dialogue box.



Internet Access: you may access any Internet resource on the Vancouver Island University network (e.g. the VIU web site, the library catalogue) without identifying yourself; however, when you try to access an Internet resource outside the VIU network (e.g. Hotmail, Google, Canada.com, EbscoHost databases in Marlin), **you will be asked to log in to WISP:** Log in to WISP with your student number and registration PIN (this is the PIN you use to access your course wait lists, timetables, grades, etc. -- **not** your Library PIN), or your employee number and PIN (this is the PIN you use to access the Employee Portal, and is set initially to your Social Insurance Number (with no spaces.) **Please note:** students **MUST** change their registration PINs from the initial birthdate setting to a PIN of their own choosing (between 5 & 32 characters) to use WISP; **WISP will not accept the birthdate PIN.**

LIBRARY INFORMATION COMMONS