

Using WISP with Windows Vista

Please note: Malaspina Commons staff have tested the information presented in this guide, and are pleased to offer it to our students and employees as a help resource. The guidance offered in this document is to be executed by the user, at the user's own risk. Because user-owned equipment is subject to variability in capability and configuration, we cannot guarantee connectivity to VIU's network services.

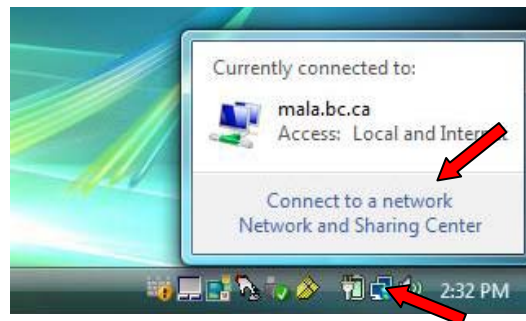
WISP is an unsecured wireless network available throughout VIU's Nanaimo and Cowichan campuses. Use of WISP is limited to VIU students and employees, and is subject to the terms and conditions specified in VIU's [Policy on Use of Information Technology](#).

Connecting to WISP

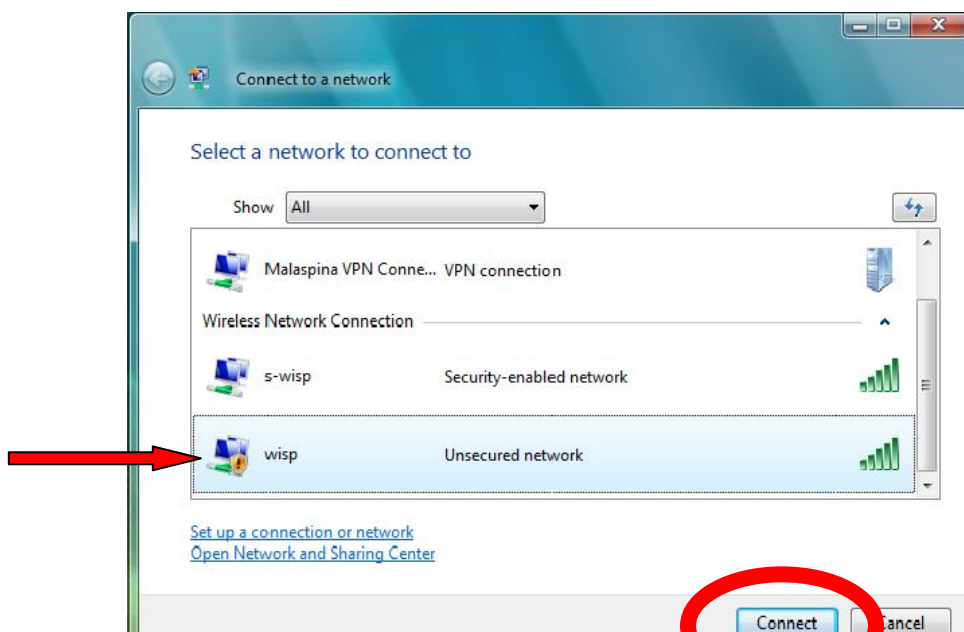
At the Nanaimo campus, your laptop will detect two available wireless networks: WISP and S-WISP. Your computer will not be able to connect to S-WISP without being configured to access the secure network (see the technical guides on the Wireless Networking web page (<http://www.viu.ca/technology/general/wireless.asp>) for help configuring your Windows or Macintosh laptop for S-WISP access.)

If you are having trouble connecting to the wireless network, it may be that your computer is trying to connect to S-WISP, but is not configured to do so. Try connecting to WISP instead – you should not have to do any special configuration to access WISP.

Click once on the wireless icon in your taskbar, and then click on Connect to a network:

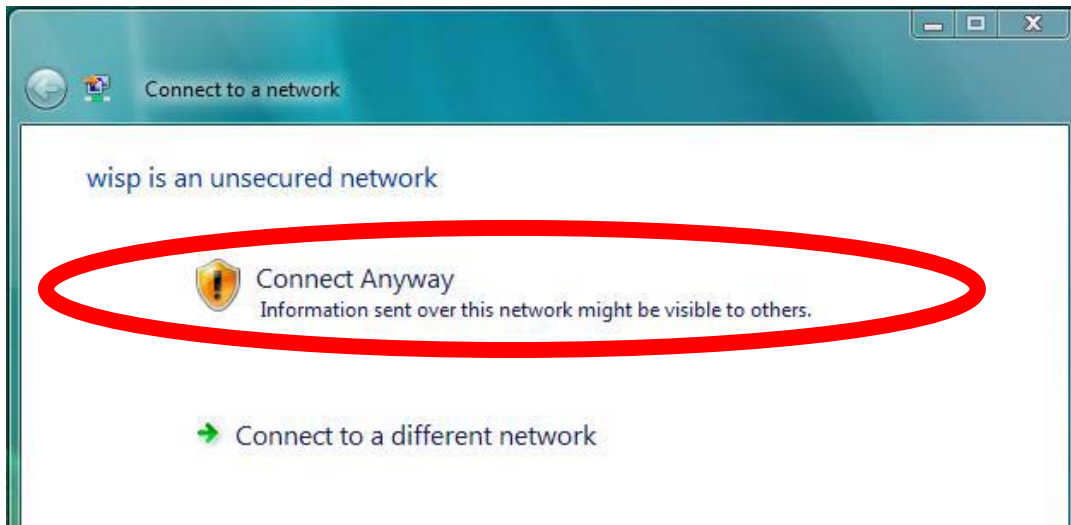


In the list of available wireless networks, click on WISP, and then click the Connect button (you may have to click on and disconnect from S-WISP first before connecting to WISP.)

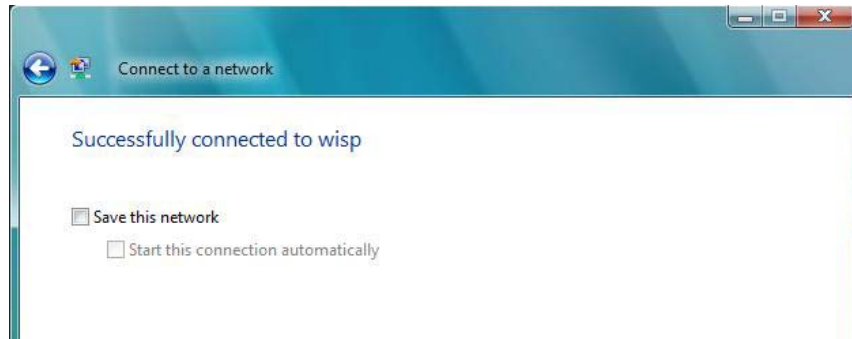


LIBRARY INFORMATION COMMONS

Vista will warn you that WISP is an unsecured network. Click on Connect Anyway:



...the Wireless Network Connection dialogue box will indicate that you are connected to WISP.



Logging on to WISP

Internet Access: When you try to access an Internet resource outside the VIU network (e.g. Hotmail, Google, Canada.com, EbscoHost databases in Marlin), **you will be asked to log in to WISP**. Students may log in to WISP with their Discovery account user names and passwords, and employees may log in with their Capitan account user names and passwords.

WISP Login Required

You have requested a network resource that is not hosted on a Malaspina University-College Web Server. In order to access this resource on the wireless network you must first log-in to the WISP service.

NOTE:

For improved performance and security we recommend that you use the Malaspina University-College S-WISP service. For details on setting up and using S-WISP go to: <http://www.mala.ca/technology/general/wireless.asp>

If you are a student you may log-in using your Discovery user ID and password:

Discovery user ID:	<input type="text"/>	Go >>
Password:	<input type="password"/>	

If you are an employee you may log-in using your Capitan user ID and password:
(If you have been given a WISP user ID and password you may also enter them here)

Capitan user ID:	<input type="text"/>	Go >>
Password:	<input type="password"/>	

LIBRARY INFORMATION COMMONS